



MARINA PALMS

YACHT CLUB & RESIDENCES

M I A M I

17201 Biscayne Boulevard, North Miami Beach, FL 33160

2nd & 3rd Floor Residences

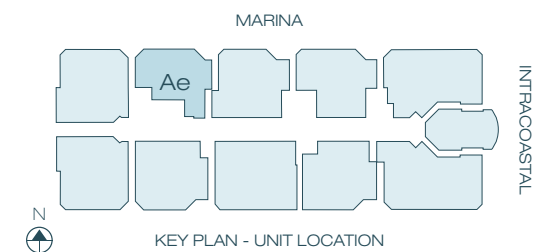


INTRACOASTAL

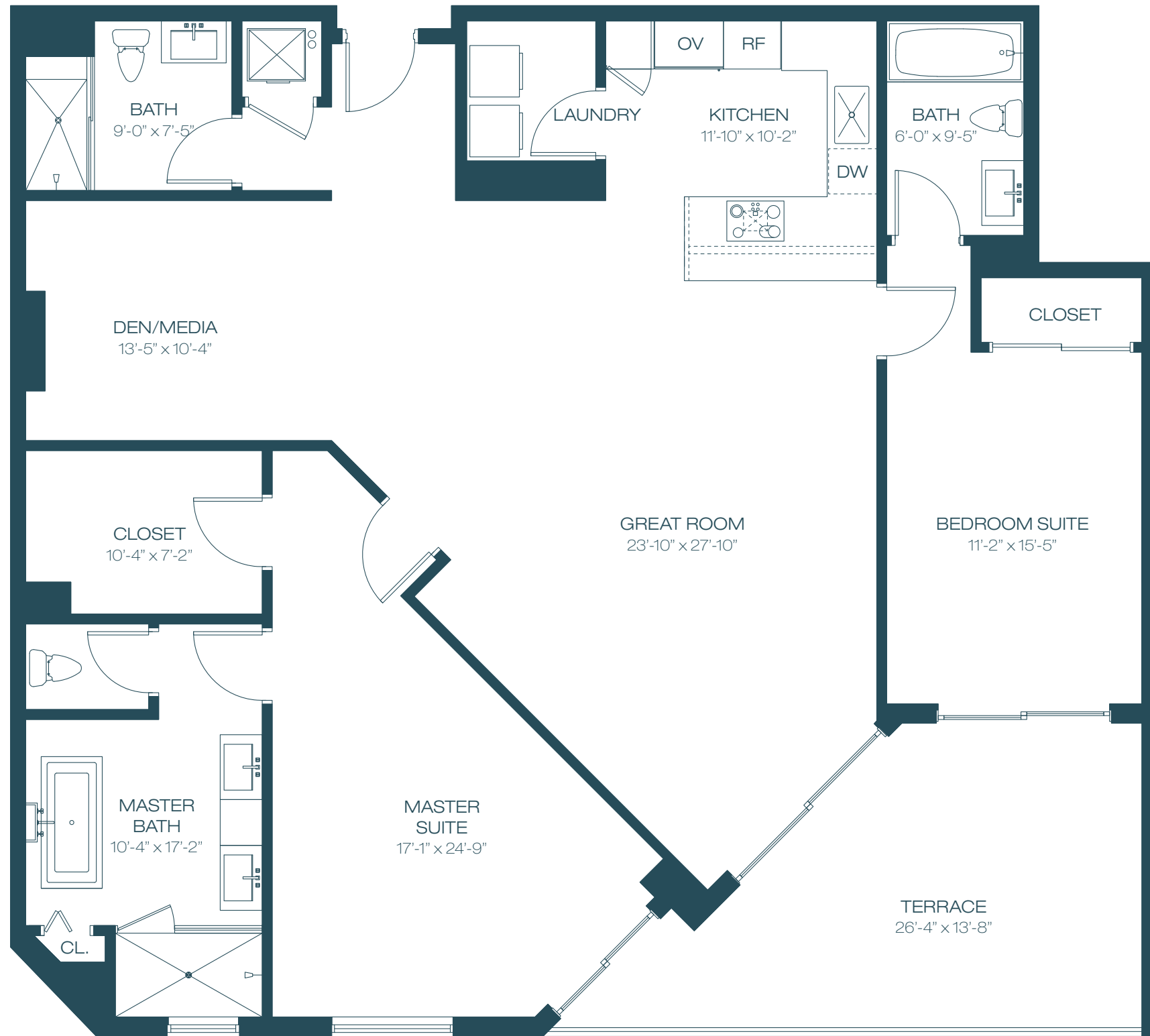
UNIT Ae - 03 Line

2	BEDROOMS	2	BATHROOMS
INTERIOR		1,530 SF	142 M ²
TERRACE		187 SF	17 M ²
TOTAL		1,717 SF	159 M ²

17201 BISCAYNE BOULEVARD, NORTH MIAMI BEACH, FL 33160



All dimensions are approximate and all floor plans and development plans are subject to change. Stated square footages and dimensions are measured to the exterior boundaries of the exterior walls and the centerline of interior demising walls between units and in fact vary from the dimensions that would be determined by using the description and definition of the "Unit" set forth in the Declaration (which generally only includes the interior airspace between the perimeter walls and excludes all interior structural components and other common elements). This method used herein is generally found in sales materials and is provided to allow a prospective buyer to compare the Units with units in other condominium projects that utilize the same method. The square footage of the units, as determined under both methods, can be found in Exhibit 2 to the Declaration of Condominium. Terraces are Limited Common Elements, but are not part of the Unit. Measurements of rooms set forth on this floor plan are generally taken at the farthest points of each given room (as described above and as if the room were a perfect rectangle), without regard for any cutouts or variations. Accordingly, the area of the actual room will typically be smaller than the product obtained by multiplying the stated length and width. All square footages and dimensions are estimates which are based on preliminary plans and will vary with actual construction. This floor plan represents the typical floor plan for the residence type indicated and is provided for informational purposes only. The actual floor plan of the residence may differ. All floor plans, specifications and other development plans are proposed and conceptual only, and are subject to change and will not necessarily accurately reflect the final plans and specifications for the development.

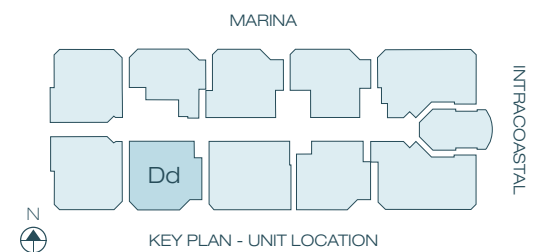


UNIT Cd - 04 Line

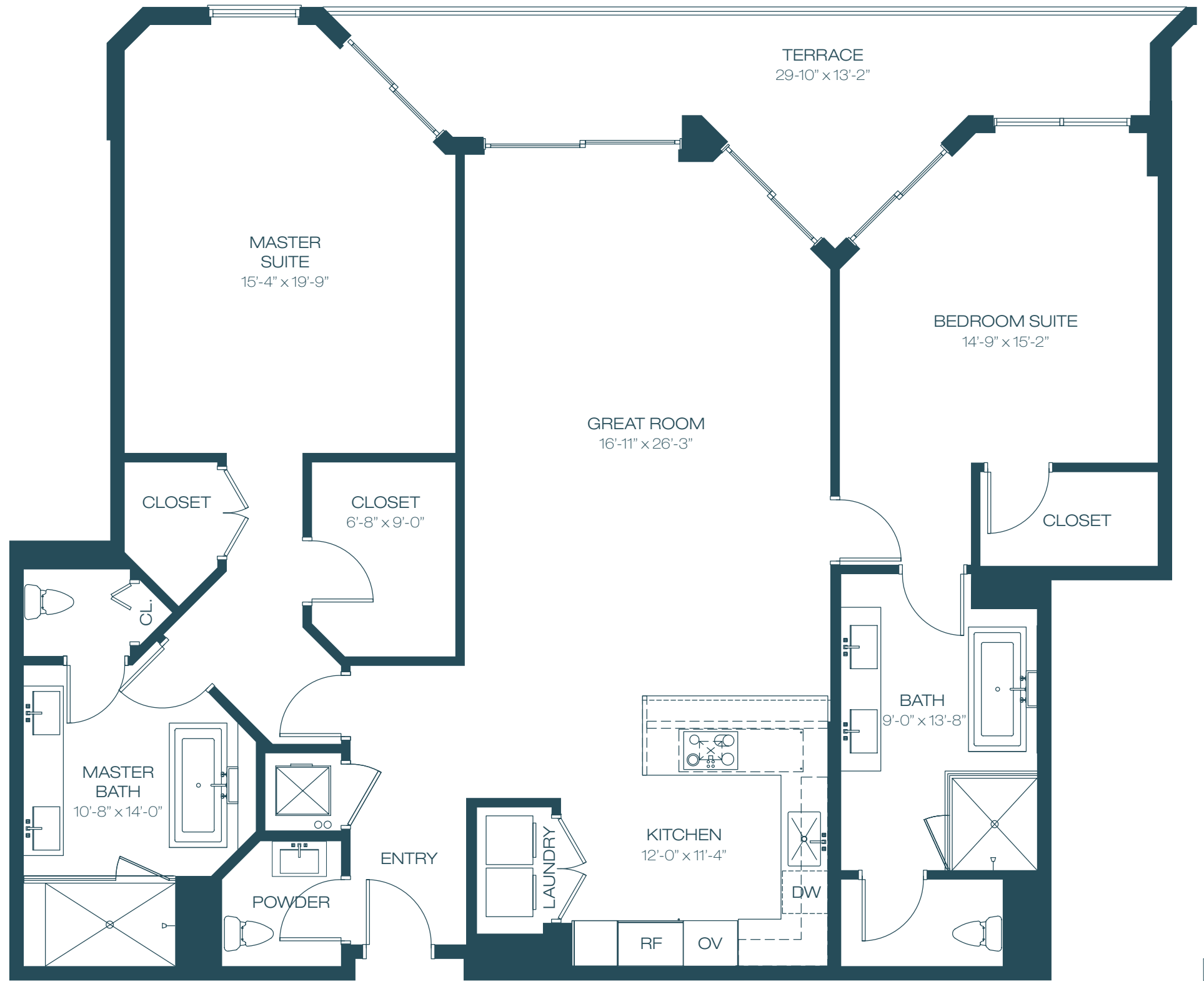
2	BEDROOMS + DEN	3	BATHROOMS
INTERIOR	1,912 SF		178 M ²
TERRACE	250 SF		23 M ²
TOTAL	2,162 SF		201 M ²

17201 BISCAYNE BOULEVARD, NORTH MIAMI BEACH, FL 33160

INTRACOASTAL



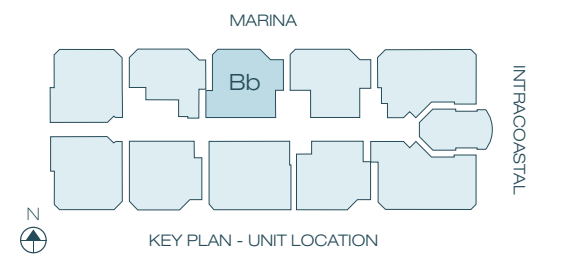
All dimensions are approximate and all floor plans and development plans are subject to change. Stated square footages and dimensions are measured to the exterior boundaries of the exterior walls and the centerline of interior demising walls between units and in fact vary from the dimensions that would be determined by using the description and definition of the "Unit" set forth in the Declaration (which generally only includes the interior airspace between the perimeter walls and excludes all interior structural components and other common elements). This method used herein is generally found in sales materials and is provided to allow a prospective buyer to compare the Units with units in other condominium projects that utilize the same method. The square footage of the units, as determined under both methods, can be found in Exhibit 2 to the Declaration of Condominium. Terraces are Limited Common Elements, but are not part of the Unit. Measurements of rooms set forth on this floor plan are generally taken at the farthest points of each given room (as described above and as if the room were a perfect rectangle), without regard for any cutouts or variations. Accordingly, the area of the actual room will typically be smaller than the product obtained by multiplying the stated length and width. All square footages and dimensions are estimates which are based on preliminary plans and will vary with actual construction. This floor plan represents the typical floor plan for the residence type indicated and is provided for informational purposes only. The actual floor plan of the residence may differ. All floor plans, specifications and other development plans are proposed and conceptual only, and are subject to change and will not necessarily accurately reflect the final plans and specifications for the development.



UNIT Bb - 05 Line

2	BEDROOMS	2.5	BATHROOMS
INTERIOR		1,939 SF	180 M ²
TERRACE		197 SF	18 M ²
TOTAL		2,136 SF	199 M ²

17201 BISCAYNE BOULEVARD, NORTH MIAMI BEACH, FL 33160



INTRACOASTAL

All dimensions are approximate and all floor plans and development plans are subject to change. Stated square footages and dimensions are measured to the exterior boundaries of the exterior walls and the centerline of interior demising walls between units and in fact vary from the dimensions that would be determined by using the description and definition of the "Unit" set forth in the Declaration (which generally only includes the interior airspace between the perimeter walls and excludes all interior structural components and other common elements). This method used herein is generally found in sales materials and is provided to allow a prospective buyer to compare the Units with units in other condominium projects that utilize the same method. The square footage of the units, as determined under both methods, can be found in Exhibit 2 to the Declaration of Condominium. Terraces are Limited Common Elements, but are not part of the Unit. Measurements of rooms set forth on this floor plan are generally taken at the farthest points of each given room (as described above and as if the room were a perfect rectangle), without regard for any cutouts or variations. Accordingly, the area of the actual room will typically be smaller than the product obtained by multiplying the stated length and width. All square footages and dimensions are estimates which are based on preliminary plans and will vary with actual construction. This floor plan represents the typical floor plan for the residence type indicated and is provided for informational purposes only. The actual floor plan of the residence may differ. All floor plans, specifications and other development plans are proposed and conceptual only, and are subject to change and will not necessarily accurately reflect the final plans and specifications for the development.



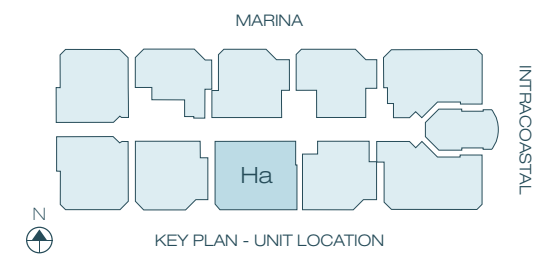
UNIT Ha - 06 Line

3	BEDROOMS	3.5	BATHROOMS
INTERIOR		2,287 SF	213 M ²
TERRACE		131 SF	12 M ²

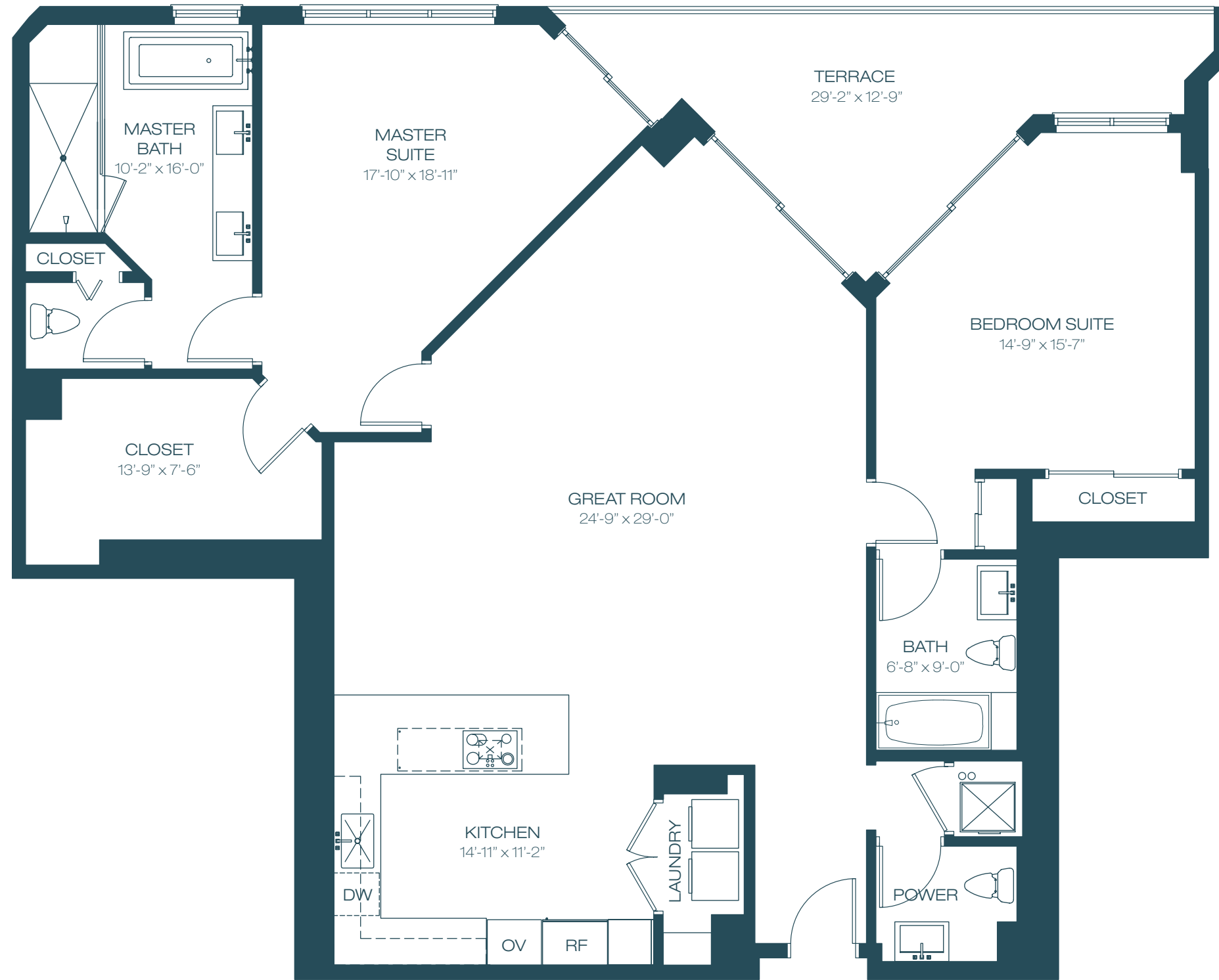
TOTAL		2,418 SF	225 M ²

17201 BISCAYNE BOULEVARD, NORTH MIAMI BEACH, FL 33160

INTRACOASTAL



All dimensions are approximate and all floor plans and development plans are subject to change. Stated square footages and dimensions are measured to the exterior boundaries of the exterior walls and the centerline of interior demising walls between units and in fact vary from the dimensions that would be determined by using the description and definition of the "Unit" set forth in the Declaration (which generally only includes the interior airspace between the perimeter walls and excludes all interior structural components and other common elements). This method used herein is generally found in sales materials and is provided to allow a prospective buyer to compare the Units with units in other condominium projects that utilize the same method. The square footage of the units, as determined under both methods, can be found in Exhibit 2 to the Declaration of Condominium. Terraces are Limited Common Elements, but are not part of the Unit. Measurements of rooms set forth on this floor plan are generally taken at the farthest points of each given room (as described above and as if the room were a perfect rectangle), without regard for any cutouts or variations. Accordingly, the area of the actual room will typically be smaller than the product obtained by multiplying the stated length and width. All square footages and dimensions are estimates which are based on preliminary plans and will vary with actual construction. This floor plan represents the typical floor plan for the residence type indicated and is provided for informational purposes only. The actual floor plan of the residence may differ. All floor plans, specifications and other development plans are proposed and conceptual only, and are subject to change and will not necessarily accurately reflect the final plans and specifications for the development.

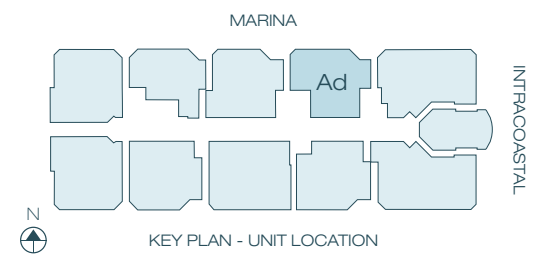


UNIT Ad - 07Line

2	BEDROOMS	2.5	BATHROOMS
INTERIOR		1,843 SF	171 M ²
TERRACE		209 SF	19 M ²
TOTAL		2,052 SF	190 M ²

17201 BISCAYNE BOULEVARD, NORTH MIAMI BEACH, FL 33160

INTRACOASTAL



All dimensions are approximate and all floor plans and development plans are subject to change. Stated square footages and dimensions are measured to the exterior boundaries of the exterior walls and the centerline of interior demising walls between units and in fact vary from the dimensions that would be determined by using the description and definition of the "Unit" set forth in the Declaration (which generally only includes the interior airspace between the perimeter walls and excludes all interior structural components and other common elements). This method used herein is generally found in sales materials and is provided to allow a prospective buyer to compare the Units with units in other condominium projects that utilize the same method. The square footage of the units, as determined under both methods, can be found in Exhibit 2 to the Declaration of Condominium. Terraces are Limited Common Elements, but are not part of the Unit. Measurements of rooms set forth on this floor plan are generally taken at the farthest points of each given room (as described above and as if the room were a perfect rectangle), without regard for any cutouts or variations. Accordingly, the area of the actual room will typically be smaller than the product obtained by multiplying the stated length and width. All square footages and dimensions are estimates which are based on preliminary plans and will vary with actual construction. This floor plan represents the typical floor plan for the residence type indicated and is provided for informational purposes only. The actual floor plan of the residence may differ. All floor plans, specifications and other development plans are proposed and conceptual only, and are subject to change and will not necessarily accurately reflect the final plans and specifications for the development.

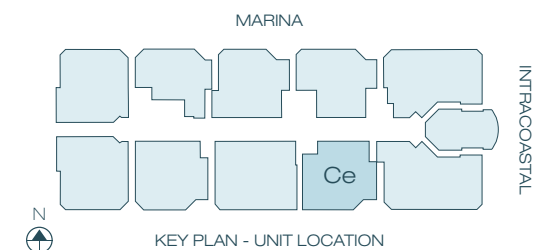


UNIT Ce - 08 Line

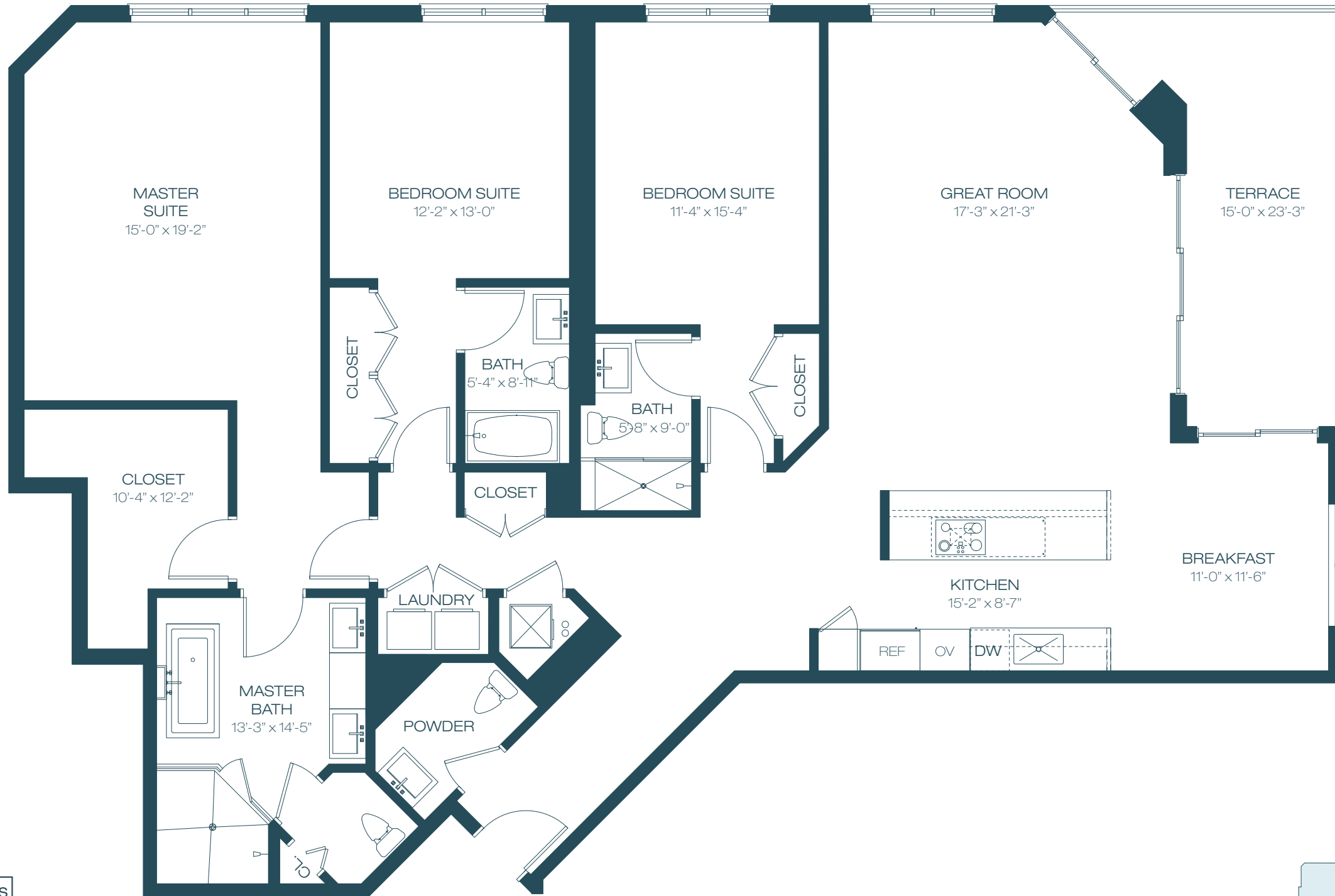
2	BEDROOMS + DEN	3	BATHROOMS
INTERIOR	1,840 SF	171 M ²	
TERRACE	271 SF	25 M ²	
TOTAL	2,111 SF	196 M ²	

17201 BISCAYNE BOULEVARD, NORTH MIAMI BEACH, FL 33160

INTRACOASTAL



All dimensions are approximate and all floor plans and development plans are subject to change. Stated square footages and dimensions are measured to the exterior boundaries of the exterior walls and the centerline of interior demising walls and in fact vary from the dimensions that would be determined by using the description and definition of the "Unit" set forth in the Declaration (which generally only includes the interior airspace between the perimeter walls and excludes all interior structural components and other common elements). This method used herein is generally found in sales materials and is provided to allow a prospective buyer to compare the Units with units in other condominium projects that utilize the same method. The square footage of the units, as determined under both methods, can be found in Exhibit 2 to the Declaration of Condominium. Terraces are Limited Common Elements, but are not part of the Unit. Measurements of rooms set forth on this floor plan are generally taken at the farthest points of each given room (as described above and as if the room were a perfect rectangle), without regard for any cutouts or variations. Accordingly, the area of the actual room will typically be smaller than the product obtained by multiplying the stated length and width. All square footages and dimensions are estimates which are based on preliminary plans and will vary with actual construction. This floor plan represents the typical floor plan for the residence type indicated and is provided for informational purposes only. The actual floor plan of the residence may differ. All floor plans, specifications and other development plans are proposed and conceptual only, and are subject to change and will not necessarily accurately reflect the final plans and specifications for the development.

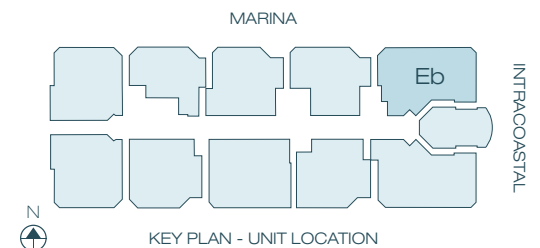


INTRACOASTAL

UNIT Eb - 09 Line

2	BEDROOMS	3.5	BATHROOMS
INTERIOR		2,305 SF	214 M ²
TERRACE		191 SF	18 M ²
TOTAL		2,496 SF	232 M ²

17201 BISCAYNE BOULEVARD, NORTH MIAMI BEACH, FL 33160



All dimensions are approximate and all floor plans and development plans are subject to change. Stated square footages and dimensions are measured to the exterior boundaries of the exterior walls and the centerline of interior demising walls between units and in fact vary from the dimensions that would be determined by using the description and definition of the "Unit" set forth in the Declaration (which generally only includes the interior airspace between the perimeter walls and excludes all interior structural components and other common elements). This method used herein is generally found in sales materials and is provided to allow a prospective buyer to compare the Units with units in other condominium projects that utilize the same method. The square footage of the units, as determined under both methods, can be found in Exhibit 2 to the Declaration of Condominium. Terraces are Limited Common Elements, but are not part of the Unit. Measurements of rooms set forth on this floor plan are generally taken at the farthest points of each given room (as described above and as if the room were a perfect rectangle), without regard for any cutouts or variations. Accordingly, the area of the actual room will typically be smaller than the product obtained by multiplying the stated length and width. All square footages and dimensions are estimates which are based on preliminary plans and will vary with actual construction. This floor plan represents the typical floor plan for the residence type indicated and is provided for informational purposes only. The actual floor plan of the residence may differ. All floor plans, specifications and other development plans are proposed and conceptual only, and are subject to change and will not necessarily accurately reflect the final plans and specifications for the development.



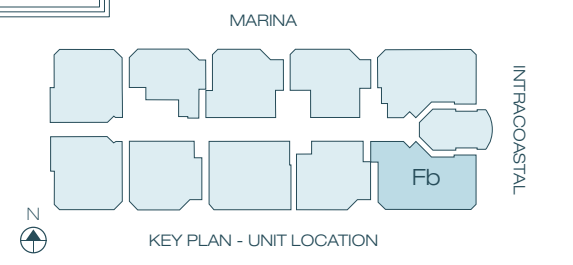
INTRACOASTAL

UNIT Fb - 10 Line

3	BEDROOMS	3.5	BATHROOMS
INTERIOR		2,484 SF	231 M ²
TERRACE		191 SF	18 M ²

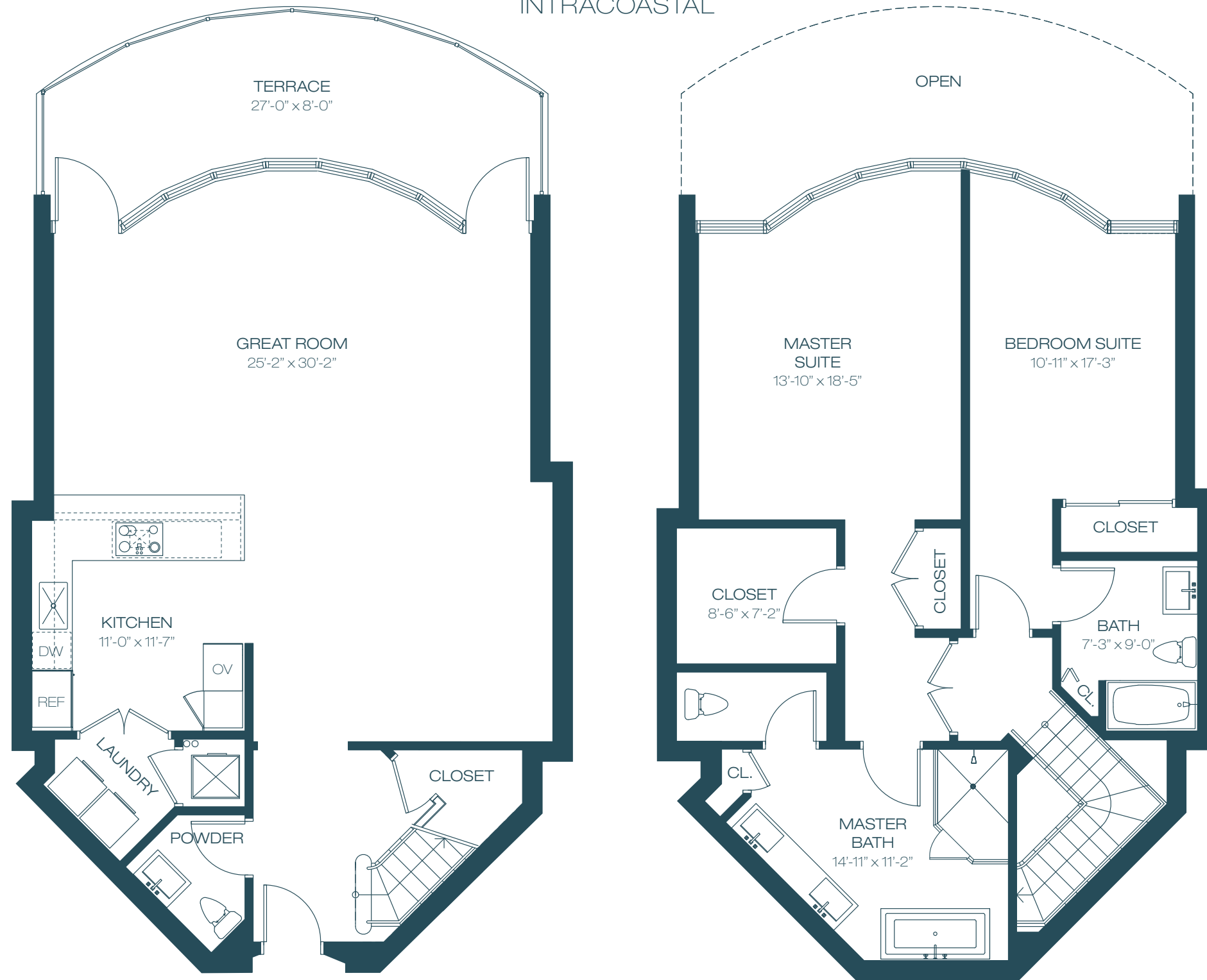
TOTAL		2,675 SF	249 M ²

17201 BISCAYNE BOULEVARD, NORTH MIAMI BEACH, FL 33160



All dimensions are approximate and all floor plans and development plans are subject to change. Stated square footages and dimensions are measured to the exterior boundaries of the exterior walls and the centerline of interior demising walls between units and in fact vary from the dimensions that would be determined by using the description and definition of the "Unit" set forth in the Declaration (which generally only includes the interior airspace between the perimeter walls and excludes all interior structural components and other common elements). This method used herein is generally found in sales materials and is provided to allow a prospective buyer to compare the Units with units in other condominium projects that utilize the same method. The square footage of the units, as determined under both methods, can be found in Exhibit 2 to the Declaration of Condominium. Terraces are Limited Common Elements, but are not part of the Unit. Measurements of rooms set forth on this floor plan are generally taken at the farthest points of each given room (as described above and as if the room were a perfect rectangle), without regard for any cutouts or variations. Accordingly, the area of the actual room will typically be smaller than the product obtained by multiplying the stated length and width. All square footages and dimensions are estimates which are based on preliminary plans and will vary with actual construction. This floor plan represents the typical floor plan for the residence type indicated and is provided for informational purposes only. The actual floor plan of the residence may differ. All floor plans, specifications and other development plans are proposed and conceptual only, and are subject to change and will not necessarily accurately reflect the final plans and specifications for the development.

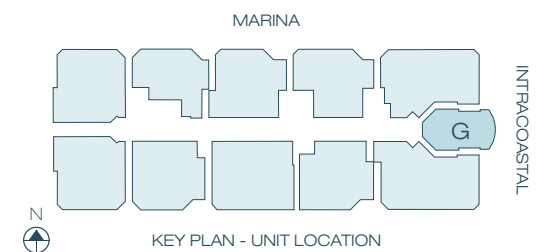
INTRACOASTAL



UNIT G - 11 Line

2	BEDROOMS	2.5	BATHROOMS
INTERIOR		2,080 SF	193 M ²
TERRACE		216 SF	20 M ²
TOTAL		2,296 SF	213 M ²

17201 BISCAYNE BOULEVARD, NORTH MIAMI BEACH, FL 33160



All dimensions are approximate and all floor plans and development plans are subject to change. Stated square footages and dimensions are measured to the exterior boundaries of the exterior walls and the centerline of interior demising walls between units and in fact vary from the dimensions that would be determined by using the description and definition of the "Unit" set forth in the Declaration (which generally only includes the interior airspace between the perimeter walls and excludes all interior structural components and other common elements). This method used herein is generally found in sales materials and is provided to allow a prospective buyer to compare the Units with units in other condominium projects that utilize the same method. The square footage of the units, as determined under both methods, can be found in Exhibit 2 to the Declaration of Condominium. Terraces are Limited Common Elements, but are not part of the Unit. Measurements of rooms set forth on this floor plan are generally taken at the farthest points of each given room (as described above and as if the room were a perfect rectangle), without regard for any cutouts or variations. Accordingly, the area of the actual room will typically be smaller than the product obtained by multiplying the stated length and width. All square footages and dimensions are estimates which are based on preliminary plans and will vary with actual construction. This floor plan represents the typical floor plan for the residence type indicated and is provided for informational purposes only. The actual floor plan of the residence may differ. All floor plans, specifications and other development plans are proposed and conceptual only, and are subject to change and will not necessarily accurately reflect the final plans and specifications for the development.

4th Floor Residences

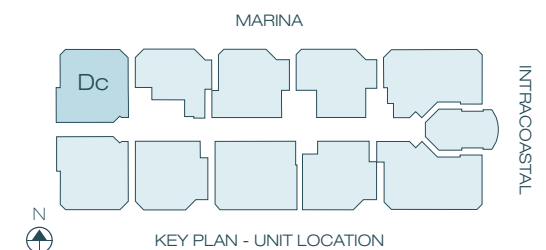


UNIT Dc - 01 Line

2	BEDROOMS + DEN	2.5	BATHROOMS
INTERIOR	2,114 SF		196 M ²
TERRACE	247 SF		23 M ²
TOTAL	2,361 SF		219 M ²

17201 BISCAYNE BOULEVARD, NORTH MIAMI BEACH, FL 33160

INTRACOASTAL



All dimensions are approximate and all floor plans and development plans are subject to change. Stated square footages and dimensions are measured to the exterior boundaries of the exterior walls and the centerline of interior demising walls between units and in fact vary from the dimensions that would be determined by using the description and definition of the "Unit" set forth in the Declaration (which generally only includes the interior airspace between the perimeter walls and excludes all interior structural components and other common elements). This method used herein is generally found in sales materials and is provided to allow a prospective buyer to compare the Units with units in other condominium projects that utilize the same method. The square footage of the units, as determined under both methods, can be found in Exhibit 2 to the Declaration of Condominium. Terraces are Limited Common Elements, but are not part of the Unit. Measurements of rooms set forth on this floor plan are generally taken at the farthest points of each given room (as described above and as if the room were a perfect rectangle), without regard for any cutouts or variations. Accordingly, the area of the actual room will typically be smaller than the product obtained by multiplying the stated length and width. All square footages and dimensions are estimates which are based on preliminary plans and will vary with actual construction. This floor plan represents the typical floor plan for the residence type indicated and is provided for informational purposes only. The actual floor plan of the residence may differ. All floor plans, specifications and other development plans are proposed and conceptual only, and are subject to change and will not necessarily accurately reflect the final plans and specifications for the development.

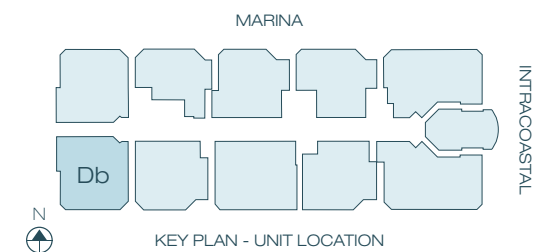


UNIT Db - 02 Line

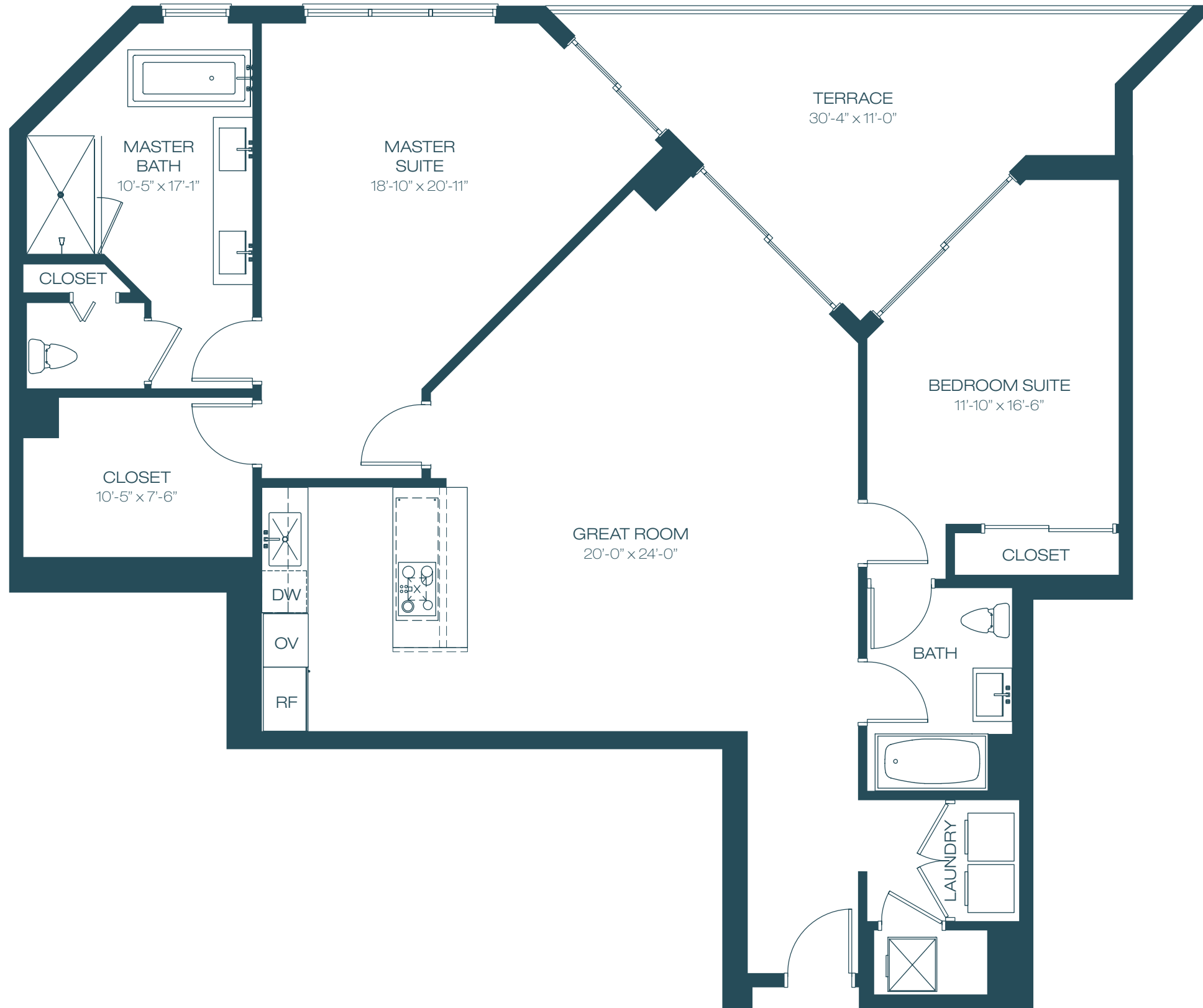
2	BEDROOMS + DEN	2.5	BATHROOMS
INTERIOR	2,114 SF	196 M ²	
TERRACE	248 SF	23 M ²	
TOTAL	2,362 SF	219 M ²	

17201 BISCAYNE BOULEVARD, NORTH MIAMI BEACH, FL 33160

INTRACOASTAL



All dimensions are approximate and all floor plans and development plans are subject to change. Stated square footages and dimensions are measured to the exterior boundaries of the exterior walls and the centerline of interior demising walls between units and in fact vary from the dimensions that would be determined by using the description and definition of the "Unit" set forth in the Declaration (which generally only includes the interior airspace between the perimeter walls and excludes all interior structural components and other common elements). This method used herein is generally found in sales materials and is provided to allow a prospective buyer to compare the Units with units in other condominium projects that utilize the same method. The square footage of the units, as determined under both methods, can be found in Exhibit 2 to the Declaration of Condominium. Terraces are Limited Common Elements, but are not part of the Unit. Measurements of rooms set forth on this floor plan are generally taken at the farthest points of each given room (as described above and as if the room were a perfect rectangle), without regard for any cutouts or variations. Accordingly, the area of the actual room will typically be smaller than the product obtained by multiplying the stated length and width. All square footages and dimensions are estimates which are based on preliminary plans and will vary with actual construction. This floor plan represents the typical floor plan for the residence type indicated and is provided for informational purposes only. The actual floor plan of the residence may differ. All floor plans, specifications and other development plans are proposed and conceptual only, and are subject to change and will not necessarily accurately reflect the final plans and specifications for the development.



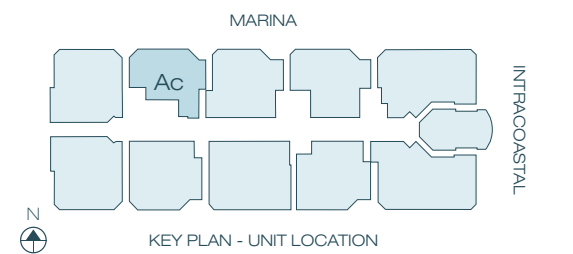
INTRACOASTAL

UNIT Ac - 03 Line

2	BEDROOMS	2	BATHROOMS
INTERIOR		1,581 SF	147 M ²
TERRACE		229 SF	21 M ²

TOTAL		1,810 SF	168 M ²

17201 BISCAYNE BOULEVARD, NORTH MIAMI BEACH, FL 33160



All dimensions are approximate and all floor plans and development plans are subject to change. Stated square footages and dimensions are measured to the exterior boundaries of the exterior walls and the centerline of interior demising walls between units and in fact vary from the dimensions that would be determined by using the description and definition of the "Unit" set forth in the Declaration (which generally only includes the interior airspace between the perimeter walls and excludes all interior structural components and other common elements). This method used herein is generally found in sales materials and is provided to allow a prospective buyer to compare the Units with units in other condominium projects that utilize the same method. The square footage of the units, as determined under both methods, can be found in Exhibit 2 to the Declaration of Condominium. Terraces are Limited Common Elements, but are not part of the Unit. Measurements of rooms set forth on this floor plan are generally taken at the farthest points of each given room (as described above and as if the room were a perfect rectangle), without regard for any cutouts or variations. Accordingly, the area of the actual room will typically be smaller than the product obtained by multiplying the stated length and width. All square footages and dimensions are estimates which are based on preliminary plans and will vary with actual construction. This floor plan represents the typical floor plan for the residence type indicated and is provided for informational purposes only. The actual floor plan of the residence may differ. All floor plans, specifications and other development plans are proposed and conceptual only, and are subject to change and will not necessarily accurately reflect the final plans and specifications for the development.

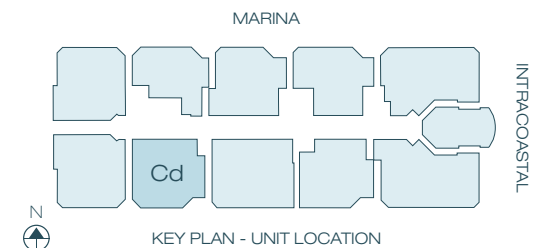


INTRACOASTAL

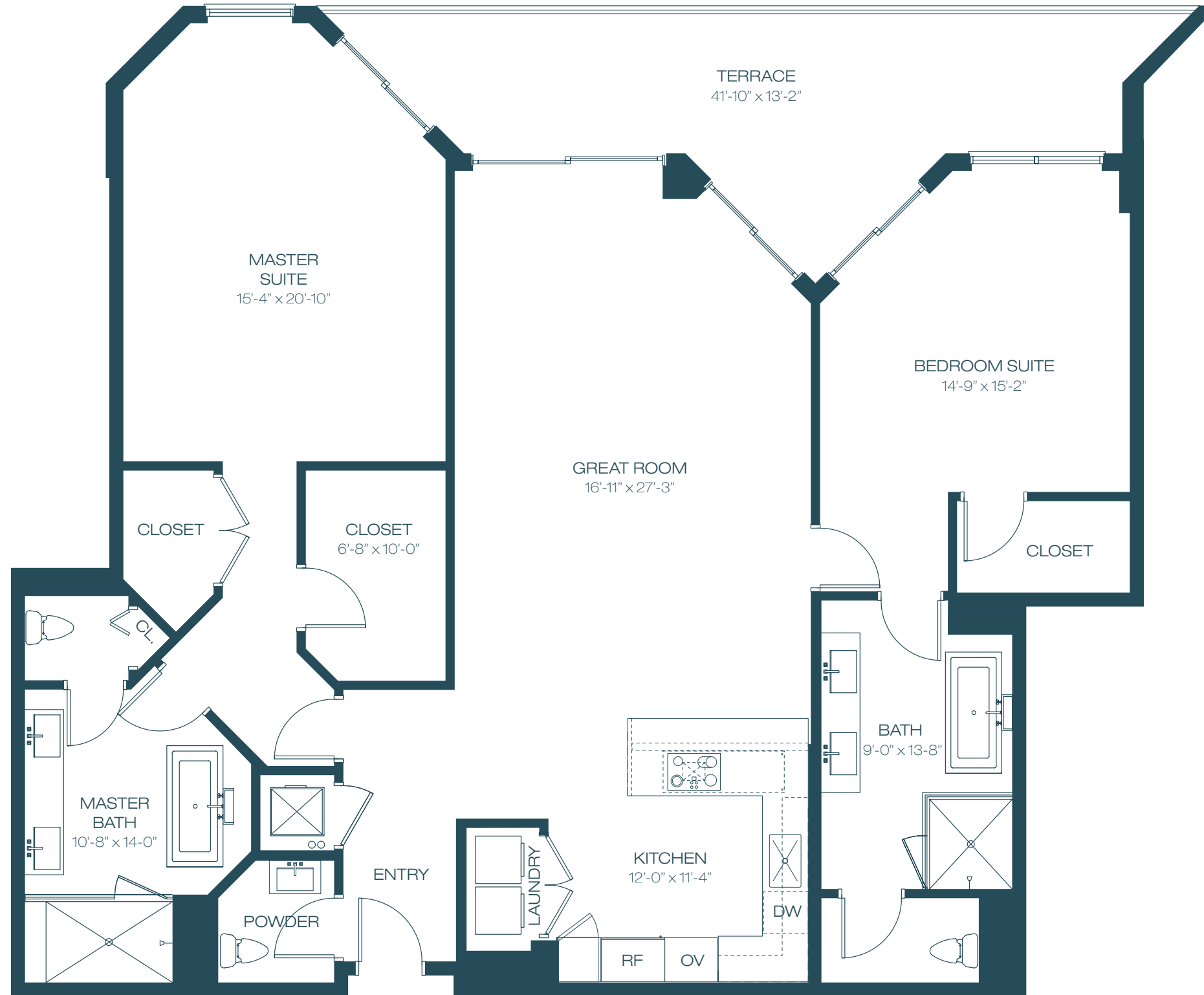
UNIT Cb - 04 Line

2	BEDROOMS + DEN	3	BATHROOMS
INTERIOR	1,961 SF	182 M ²	
TERRACE	295 SF	27 M ²	
TOTAL	2,256 SF	209 M²	

17201 BISCAYNE BOULEVARD, NORTH MIAMI BEACH, FL 33160



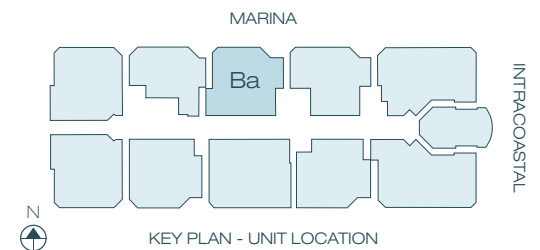
All dimensions are approximate and all floor plans and development plans are subject to change. Stated square footages and dimensions are measured to the exterior boundaries of the exterior walls and the centerline of interior demising walls between units and in fact vary from the dimensions that would be determined by using the description and definition of the "Unit" set forth in the Declaration (which generally only includes the interior airspace between the perimeter walls and excludes all interior structural components and other common elements). This method used herein is generally found in sales materials and is provided to allow a prospective buyer to compare the Units with units in other condominium projects that utilize the same method. The square footage of the units, as determined under both methods, can be found in Exhibit 2 to the Declaration of Condominium. Terraces are Limited Common Elements, but are not part of the Unit. Measurements of rooms set forth on this floor plan are generally taken at the farthest points of each given room (as described above and as if the room were a perfect rectangle), without regard for any cutouts or variations. Accordingly, the area of the actual room will typically be smaller than the product obtained by multiplying the stated length and width. All square footages and dimensions are estimates which are based on preliminary plans and will vary with actual construction. This floor plan represents the typical floor plan for the residence type indicated and is provided for informational purposes only. The actual floor plan of the residence may differ. All floor plans, specifications and other development plans are proposed and conceptual only, and are subject to change and will not necessarily accurately reflect the final plans and specifications for the development.



UNIT Ba - 05 Line

2	BEDROOMS	2.5	BATHROOMS
INTERIOR		1,976 SF	183 M ²
BALCONY		288 SF	27 M ²
TOTAL		2,264 SF	210 M ²

17201 BISCAYNE BOULEVARD, NORTH MIAMI BEACH, FL 33160



INTRACOASTAL

All dimensions are approximate and all floor plans and development plans are subject to change. Stated square footages and dimensions are measured to the exterior boundaries of the exterior walls and the centerline of interior demising walls between units and in fact vary from the dimensions that would be determined by using the description and definition of the "Unit" set forth in the Declaration (which generally only includes the interior airspace between the perimeter walls and excludes all interior structural components and other common elements). This method used herein is generally found in sales materials and is provided to allow a prospective buyer to compare the Units with units in other condominium projects that utilize the same method. The square footage of the units, as determined under both methods, can be found in Exhibit 2 to the Declaration of Condominium. Terraces are Limited Common Elements, but are not part of the Unit. Measurements of rooms set forth on this floor plan are generally taken at the farthest points of each given room (as described above and as if the room were a perfect rectangle), without regard for any cutouts or variations. Accordingly, the area of the actual room will typically be smaller than the product obtained by multiplying the stated length and width. All square footages and dimensions are estimates which are based on preliminary plans and will vary with actual construction. This floor plan represents the typical floor plan for the residence type indicated and is provided for informational purposes only. The actual floor plan of the residence may differ. All floor plans, specifications and other development plans are proposed and conceptual only, and are subject to change and will not necessarily accurately reflect the final plans and specifications for the development.

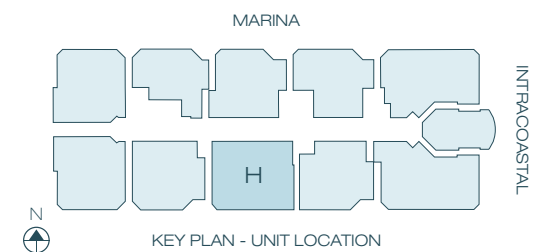


UNIT H - 06 Line

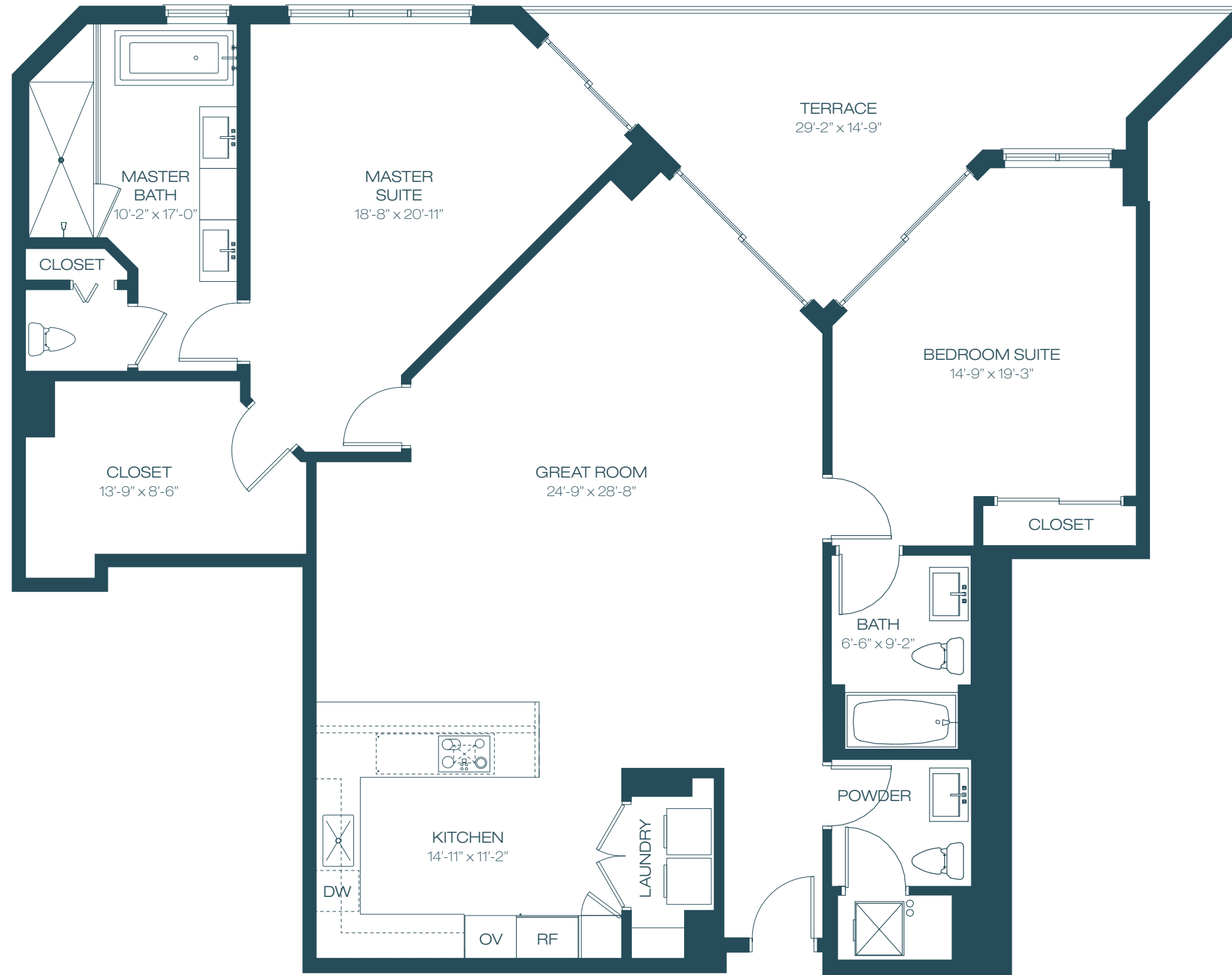
3	BEDROOMS + DEN	3.5	BATHROOMS
INTERIOR	2,332 SF		217 M ²
TERRACE	190 SF		18 M ²
TOTAL	2,522 SF		234 M ²

17201 BISCAYNE BOULEVARD, NORTH MIAMI BEACH, FL 33160

INTRACOASTAL



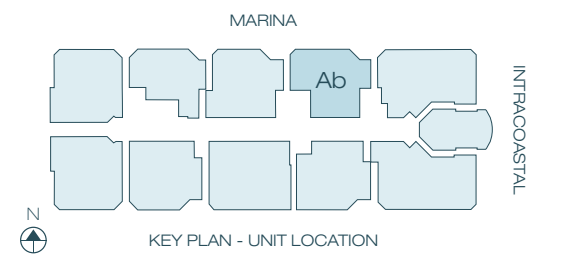
All dimensions are approximate and all floor plans and development plans are subject to change. Stated square footages and dimensions are measured to the exterior boundaries of the exterior walls and the centerline of interior demising walls between units and in fact vary from the dimensions that would be determined by using the description and definition of the "Unit" set forth in the Declaration (which generally only includes the interior airspace between the perimeter walls and excludes all interior structural components and other common elements). This method used herein is generally found in sales materials and is provided to allow a prospective buyer to compare the Units with units in other condominium projects that utilize the same method. The square footage of the units, as determined under both methods, can be found in Exhibit 2 to the Declaration of Condominium. Terraces are Limited Common Elements, but are not part of the Unit. Measurements of rooms set forth on this floor plan are generally taken at the farthest points of each given room (as described above and as if the room were a perfect rectangle), without regard for any cutouts or variations. Accordingly, the area of the actual room will typically be smaller than the product obtained by multiplying the stated length and width. All square footages and dimensions are estimates which are based on preliminary plans and will vary with actual construction. This floor plan represents the typical floor plan for the residence type indicated and is provided for informational purposes only. The actual floor plan of the residence may differ. All floor plans, specifications and other development plans are proposed and conceptual only, and are subject to change and will not necessarily accurately reflect the final plans and specifications for the development.



UNIT Ab - 07 Line

2	BEDROOMS	2.5	BATHROOMS
INTERIOR		1,904 SF	177 M ²
TERRACE		257 SF	24 M ²
TOTAL		2,161 SF	201 M ²

17201 BISCAYNE BOULEVARD, NORTH MIAMI BEACH, FL 33160



INTRACOASTAL

All dimensions are approximate and all floor plans and development plans are subject to change. Stated square footages and dimensions are measured to the exterior boundaries of the exterior walls and the centerline of interior demising walls between units and in fact vary from the dimensions that would be determined by using the description and definition of the "Unit" set forth in the Declaration (which generally only includes the interior airspace between the perimeter walls and excludes all interior structural components and other common elements). This method used herein is generally found in sales materials and is provided to allow a prospective buyer to compare the Units with units in other condominium projects that utilize the same method. The square footage of the units, as determined under both methods, can be found in Exhibit 2 to the Declaration of Condominium. Terraces are Limited Common Elements, but are not part of the Unit. Measurements of rooms set forth on this floor plan are generally taken at the farthest points of each given room (as described above and as if the room were a perfect rectangle), without regard for any cutouts or variations. Accordingly, the area of the actual room will typically be smaller than the product obtained by multiplying the stated length and width. All square footages and dimensions are estimates which are based on preliminary plans and will vary with actual construction. This floor plan represents the typical floor plan for the residence type indicated and is provided for informational purposes only. The actual floor plan of the residence may differ. All floor plans, specifications and other development plans are proposed and conceptual only, and are subject to change and will not necessarily accurately reflect the final plans and specifications for the development.

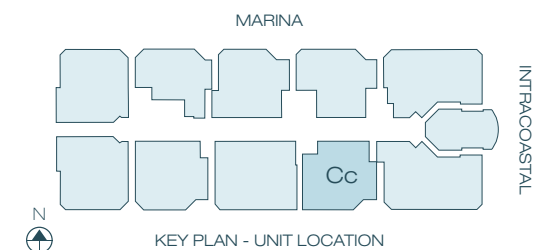


INTRACOASTAL

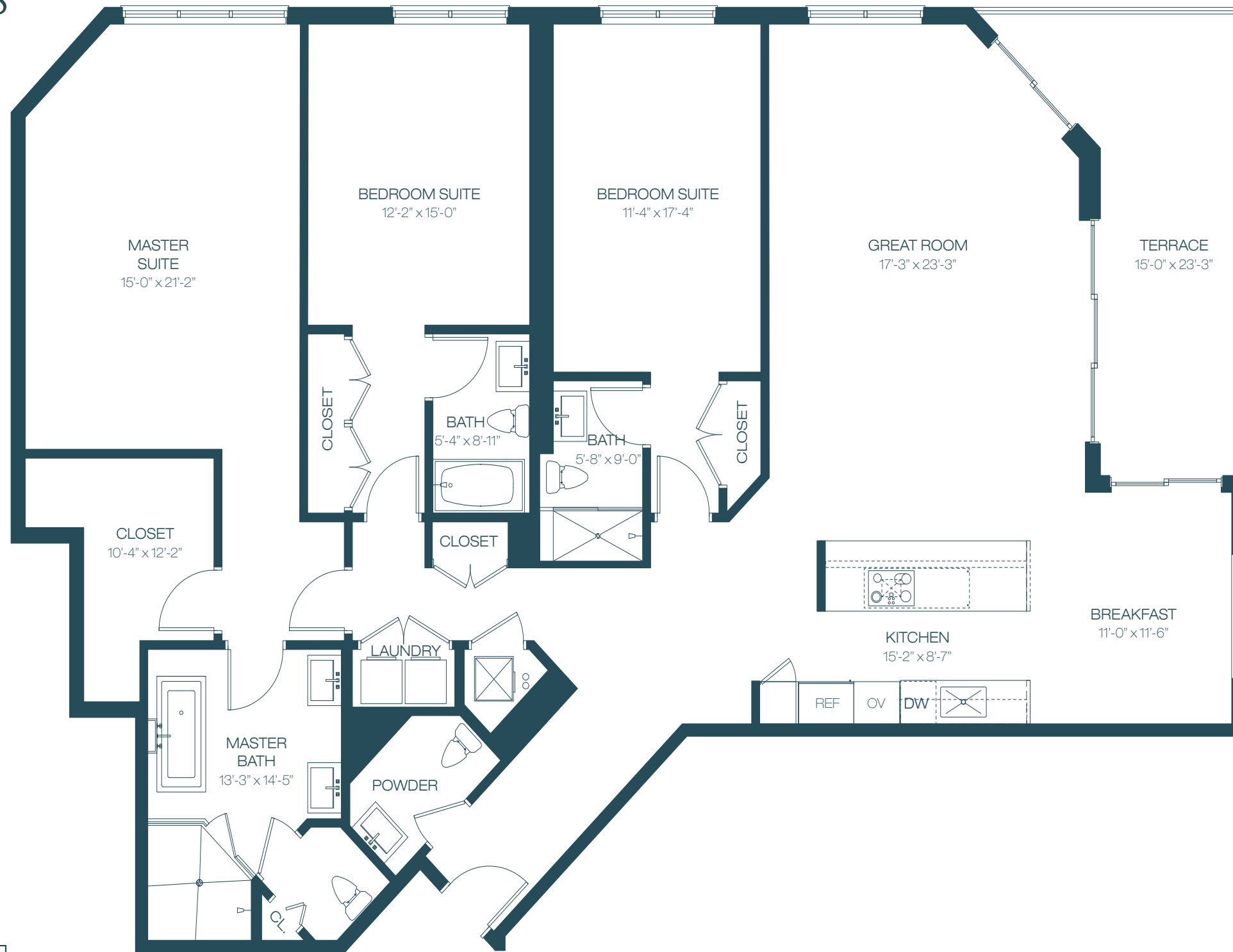
UNIT Cc - 08 Line

2	BEDROOMS + DEN	3	BATHROOMS
INTERIOR	1,893 SF		176 M ²
TERRACE	311 SF		29 M ²
TOTAL	2,204 SF		205 M²

17201 BISCAYNE BOULEVARD, NORTH MIAMI BEACH, FL 33160



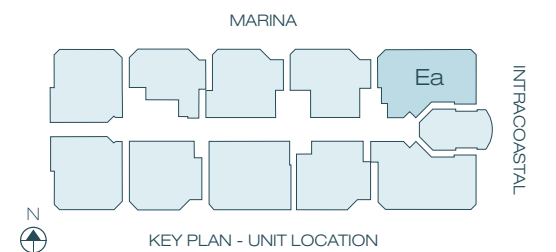
All dimensions are approximate and all floor plans and development plans are subject to change. Stated square footages and dimensions are measured to the exterior boundaries of the exterior walls and the centerline of interior demising walls between units and in fact vary from the dimensions that would be determined by using the description and definition of the "Unit" set forth in the Declaration (which generally only includes the interior airspace between the perimeter walls and excludes all interior structural components and other common elements). This method used herein is generally found in sales materials and is provided to allow a prospective buyer to compare the Units with units in other condominium projects that utilize the same method. The square footage of the units, as determined under both methods, can be found in Exhibit 2 to the Declaration of Condominium. Terraces are Limited Common Elements, but are not part of the Unit. Measurements of rooms set forth on this floor plan are generally taken at the farthest points of each given room (as described above and as if the room were a perfect rectangle), without regard for any cutouts or variations. Accordingly, the area of the actual room will typically be smaller than the product obtained by multiplying the stated length and width. All square footages and dimensions are estimates which are based on preliminary plans and will vary with actual construction. This floor plan represents the typical floor plan for the residence type indicated and is provided for informational purposes only. The actual floor plan of the residence may differ. All floor plans, specifications and other development plans are proposed and conceptual only, and are subject to change and will not necessarily accurately reflect the final plans and specifications for the development.



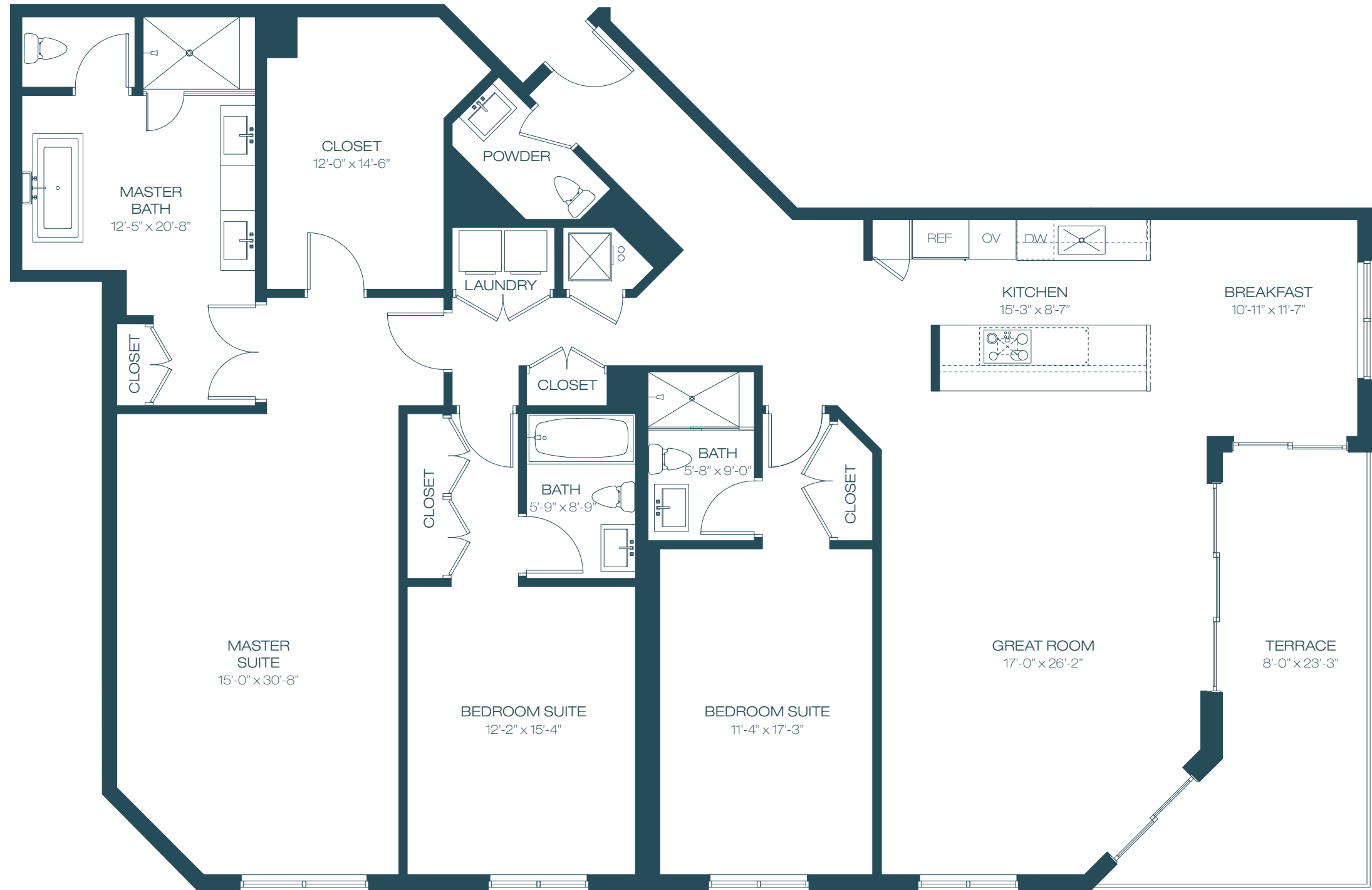
UNIT Ea - 09 Line

3	BEDROOMS	3.5	BATHROOMS
INTERIOR		2,421 SF	225 M ²
TERRACE		210 SF	19 M ²
TOTAL		2,631 SF	244 M ²

17201 BISCAYNE BOULEVARD, NORTH MIAMI BEACH, FL 33160



All dimensions are approximate and all floor plans and development plans are subject to change. Stated square footages and dimensions are measured to the exterior boundaries of the exterior walls and the centerline of interior demising walls between units and in fact vary from the dimensions that would be determined by using the description and definition of the "Unit" set forth in the Declaration (which generally only includes the interior airspace between the perimeter walls and excludes all interior structural components and other common elements). This method used herein is generally found in sales materials and is provided to allow a prospective buyer to compare the Units with units in other condominium projects that utilize the same method. The square footage of the units, as determined under both methods, can be found in Exhibit 2 to the Declaration of Condominium. Terraces are Limited Common Elements, but are not part of the Unit. Measurements of rooms set forth on this floor plan are generally taken at the farthest points of each given room (as described above and as if the room were a perfect rectangle), without regard for any cutouts or variations. Accordingly, the area of the actual room will typically be smaller than the product obtained by multiplying the stated length and width. All square footages and dimensions are estimates which are based on preliminary plans and will vary with actual construction. This floor plan represents the typical floor plan for the residence type indicated and is provided for informational purposes only. The actual floor plan of the residence may differ. All floor plans, specifications and other development plans are proposed and conceptual only, and are subject to change and will not necessarily accurately reflect the final plans and specifications for the development.

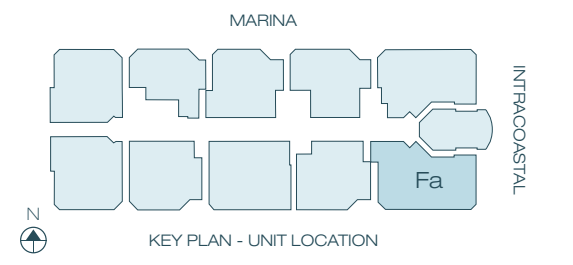


INTRACOASTAL

UNIT Fa - 10 Line

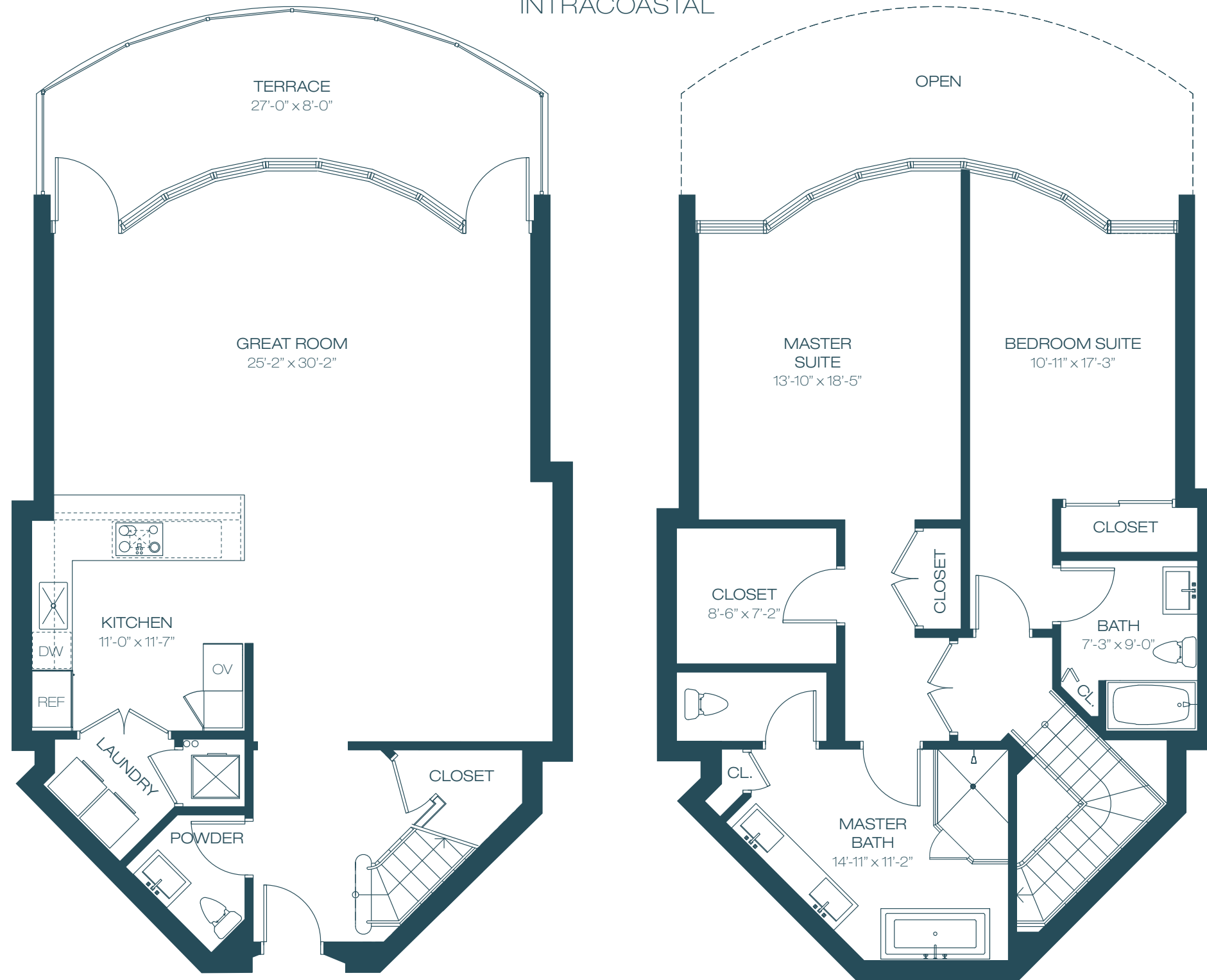
3	BEDROOMS	3.5	BATHROOMS
INTERIOR		2,599 SF	241 M ²
TERRACE		210 SF	20 M ²
TOTAL		2,809 SF	261 M ²

17201 BISCAYNE BOULEVARD, NORTH MIAMI BEACH, FL 33160



All dimensions are approximate and all floor plans and development plans are subject to change. Stated square footages and dimensions are measured to the exterior boundaries of the exterior walls and the centerline of interior demising walls between units and in fact vary from the dimensions that would be determined by using the description and definition of the "Unit" set forth in the Declaration (which generally only includes the interior airspace between the perimeter walls and excludes all interior structural components and other common elements). This method used herein is generally found in sales materials and is provided to allow a prospective buyer to compare the Units with units in other condominium projects that utilize the same method. The square footage of the units, as determined under both methods, can be found in Exhibit 2 to the Declaration of Condominium. Terraces are Limited Common Elements, but are not part of the Unit. Measurements of rooms set forth on this floor plan are generally taken at the farthest points of each given room (as described above and as if the room were a perfect rectangle), without regard for any cutouts or variations. Accordingly, the area of the actual room will typically be smaller than the product obtained by multiplying the stated length and width. All square footages and dimensions are estimates which are based on preliminary plans and will vary with actual construction. This floor plan represents the typical floor plan for the residence type indicated and is provided for informational purposes only. The actual floor plan of the residence may differ. All floor plans, specifications and other development plans are proposed and conceptual only, and are subject to change and will not necessarily accurately reflect the final plans and specifications for the development.

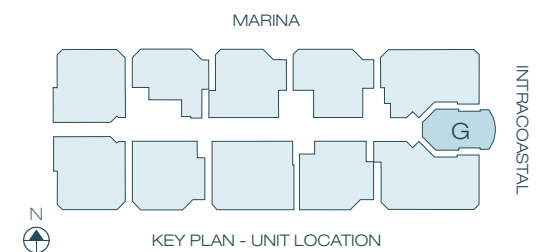
INTRACOASTAL



UNIT G - 11 Line

2	BEDROOMS	2.5	BATHROOMS
INTERIOR		2,080 SF	193 M ²
TERRACE		216 SF	20 M ²
TOTAL		2,296 SF	213 M ²

17201 BISCAYNE BOULEVARD, NORTH MIAMI BEACH, FL 33160



All dimensions are approximate and all floor plans and development plans are subject to change. Stated square footages and dimensions are measured to the exterior boundaries of the exterior walls and the centerline of interior demising walls between units and in fact vary from the dimensions that would be determined by using the description and definition of the "Unit" set forth in the Declaration (which generally only includes the interior airspace between the perimeter walls and excludes all interior structural components and other common elements). This method used herein is generally found in sales materials and is provided to allow a prospective buyer to compare the Units with units in other condominium projects that utilize the same method. The square footage of the units, as determined under both methods, can be found in Exhibit 2 to the Declaration of Condominium. Terraces are Limited Common Elements, but are not part of the Unit. Measurements of rooms set forth on this floor plan are generally taken at the farthest points of each given room (as described above and as if the room were a perfect rectangle), without regard for any cutouts or variations. Accordingly, the area of the actual room will typically be smaller than the product obtained by multiplying the stated length and width. All square footages and dimensions are estimates which are based on preliminary plans and will vary with actual construction. This floor plan represents the typical floor plan for the residence type indicated and is provided for informational purposes only. The actual floor plan of the residence may differ. All floor plans, specifications and other development plans are proposed and conceptual only, and are subject to change and will not necessarily accurately reflect the final plans and specifications for the development.