

**O1 | FIRST FLOOR**  
**4 BEDROOMS / 6.5 BATHS /**  
**MEDIA ROOM / STAFF QUARTERS**

FIRST FLOOR	SQ. FT.	SQ. M.
INTERIOR	1,971	183
EXTERIOR	1,876	174
<b>TOTAL FIRST FLOOR</b>	<b>3,847</b>	<b>357</b>

SECOND FLOOR	SQ. FT.	SQ. M.
INTERIOR	2,217	206
EXTERIOR	671	62
<b>TOTAL SECOND FLOOR</b>	<b>2,888</b>	<b>268</b>

TOTAL	SQ. FT.	SQ. M.
TOTAL INTERIOR	4,188	389
TOTAL EXTERIOR	2,547	237
<b>TOTAL</b>	<b>6,735</b>	<b>626</b>

Stated dimensions are taken from the measurement of the floor area of the first and second level of the interior of the residence, including the interior stairs, to the exterior boundaries of the exterior walls of the residence, and exclude all areas not under A/C, including, without limitation, the garage, entry, covered terraces and/or balconies. Note that measurements as set forth on this floor plan are generally taken at the greatest points of each given area (as if the area were a perfect rectangle). Accordingly,

the area of the actual space will typically be smaller than the product obtained by multiplying the stated length times width. All dimensions are approximate and may vary with actual construction, and all floor plans and development plans are subject to change



**O1 | SECOND FLOOR**  
**4 BEDROOMS / 6.5 BATHS /**  
**MEDIA ROOM / STAFF QUARTERS**

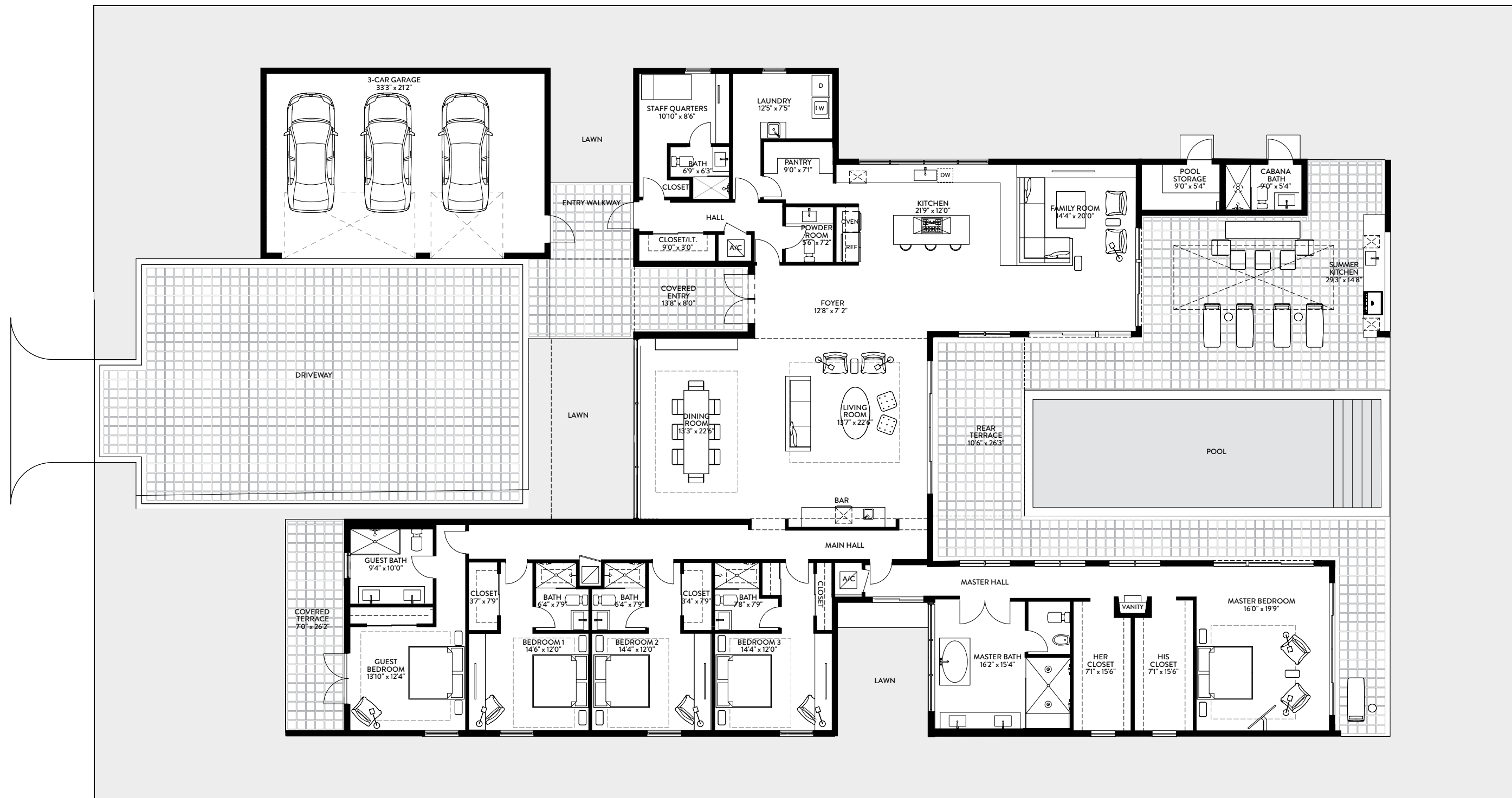
FIRST FLOOR	SQ. FT.	SQ. M.
INTERIOR	1,971	183
EXTERIOR	1,876	174
TOTAL FIRST FLOOR	3,847	357

SECOND FLOOR	SQ. FT.	SQ. M.
INTERIOR	2,217	206
EXTERIOR	671	62
TOTAL SECOND FLOOR	2,888	268

TOTAL	SQ. FT.	SQ. M.
TOTAL INTERIOR	4,188	389
TOTAL EXTERIOR	2,547	237
TOTAL	6,735	626

Stated dimensions are taken from the measurement of the floor area of the first and second level of the interior of the residence, including the interior stairs, to the exterior boundaries of the exterior walls of the residence, and exclude all areas not under A/C, including, without limitation, the garage, entry, covered terraces and/or balconies. Note that measurements as set forth on this floor plan are generally taken at the greatest points of each given area (as if the area were a perfect rectangle). Accordingly,

the area of the actual space will typically be smaller than the product obtained by multiplying the stated length times width. All dimensions are approximate and may vary with actual construction, and all floor plans and development plans are subject to change

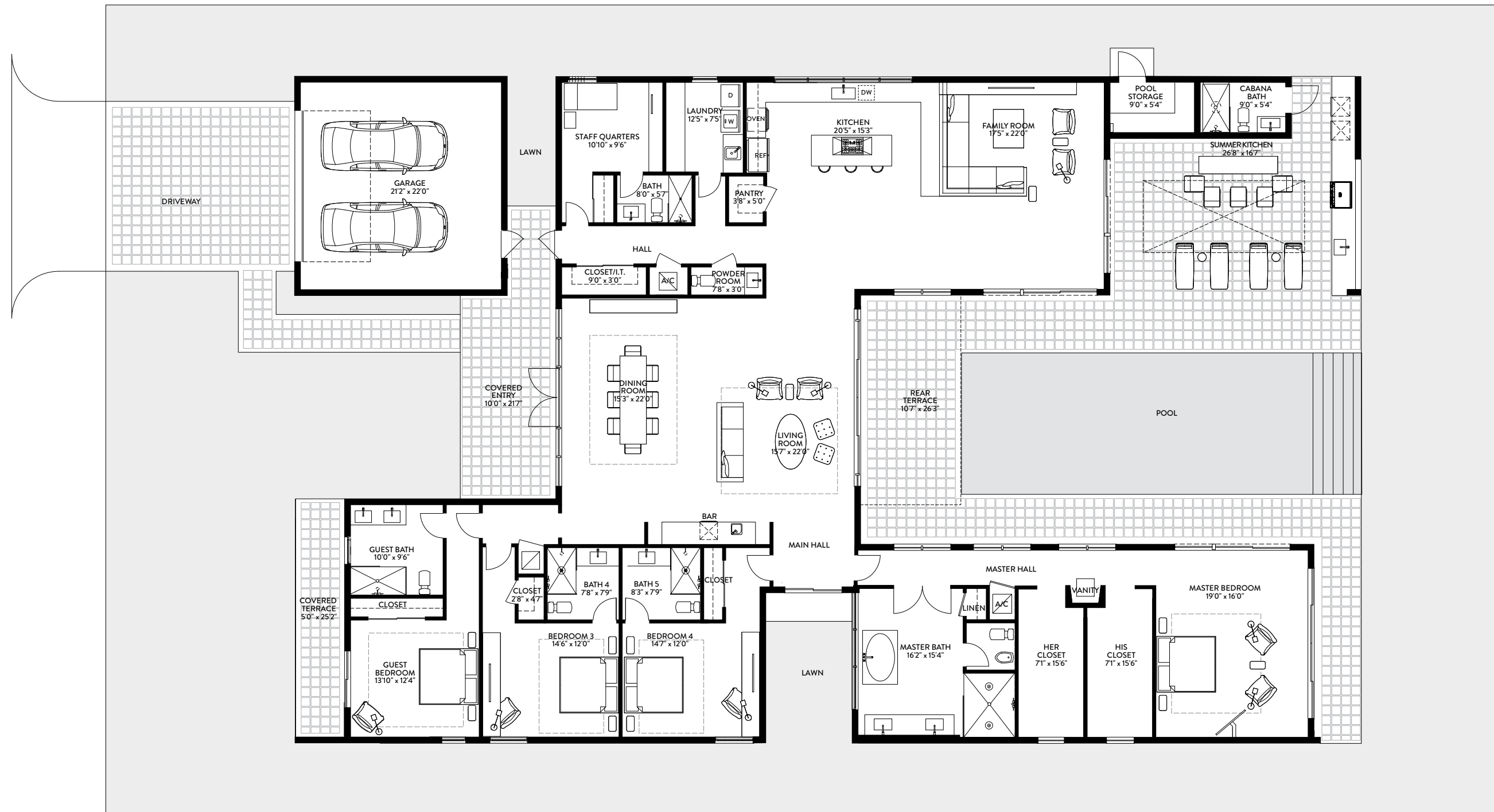


**O2A**  
**5 BEDROOMS / 7.5 BATHS /**  
**STAFF QUARTERS**

	TOTAL	SQ. FT.	SQ. M.
TOTAL INTERIOR		4,909	456
TOTAL EXTERIOR		2,384	221
<b>TOTAL</b>		<b>7,293</b>	<b>678</b>

Stated dimensions are taken from the measurement of the floor area of the first and second level of the interior of the residence, including the interior stairs, to the exterior boundaries of the exterior walls of the residence, and exclude all areas not under A/C, including, without limitation, the garage, entry, covered terraces and/or balconies. Note that measurements as set forth on this floor plan are generally taken at the greatest points of each given area (as if the area were a perfect rectangle). Accordingly,

the area of the actual space will typically be smaller than the product obtained by multiplying the stated length times width. All dimensions are approximate and may vary with actual construction, and all floor plans and development plans are subject to change



**O2B**  
**4 BEDROOMS / 6.5 BATHS /**  
**STAFF QUARTERS**

	SQ. FT.	SQ. M.
TOTAL	4,352	404
TOTAL INTERIOR	2,129	198
TOTAL EXTERIOR	6,481	602

Stated dimensions are taken from the measurement of the floor area of the first and second level of the interior of the residence, including the interior stairs, to the exterior boundaries of the exterior walls of the residence, and exclude all areas not under A/C, including, without limitation, the garage, entry, covered terraces and/or balconies. Note that measurements as set forth on this floor plan are generally taken at the greatest points of each given area (as if the area were a perfect rectangle). Accordingly,

the area of the actual space will typically be smaller than the product obtained by multiplying the stated length times width. All dimensions are approximate and may vary with actual construction, and all floor plans and development plans are subject to change



**O3A | FIRST FLOOR**  
**5 BEDROOMS / 6.5 BATHS /**  
**MEDIA ROOM / STAFF QUARTERS**

FIRST FLOOR	SQ. FT.	SQ. M.
INTERIOR	2,724	253
EXTERIOR	1,602	149
<b>TOTAL FIRST FLOOR</b>	<b>4,326</b>	<b>402</b>

SECOND FLOOR	SQ. FT.	SQ. M.
INTERIOR	2,569	239
EXTERIOR	657	61
<b>TOTAL SECOND FLOOR</b>	<b>3,226</b>	<b>300</b>

TOTAL	SQ. FT.	SQ. M.
TOTAL INTERIOR	5,293	492
TOTAL EXTERIOR	2,259	210
<b>TOTAL</b>	<b>7,552</b>	<b>702</b>

Stated dimensions are taken from the measurement of the floor area of the first and second level of the interior of the residence, including the interior stairs, to the exterior boundaries of the exterior walls of the residence, and exclude all areas not under A/C, including, without limitation, the garage, entry, covered terraces and/or balconies. Note that measurements as set forth on this floor plan are generally taken at the greatest points of each given area (as if the area were a perfect rectangle). Accordingly,

the area of the actual space will typically be smaller than the product obtained by multiplying the stated length times width. All dimensions are approximate and may vary with actual construction, and all floor plans and development plans are subject to change



**O3A | SECOND FLOOR**  
**5 BEDROOMS / 6.5 BATHS /**  
**MEDIA ROOM / STAFF QUARTERS**

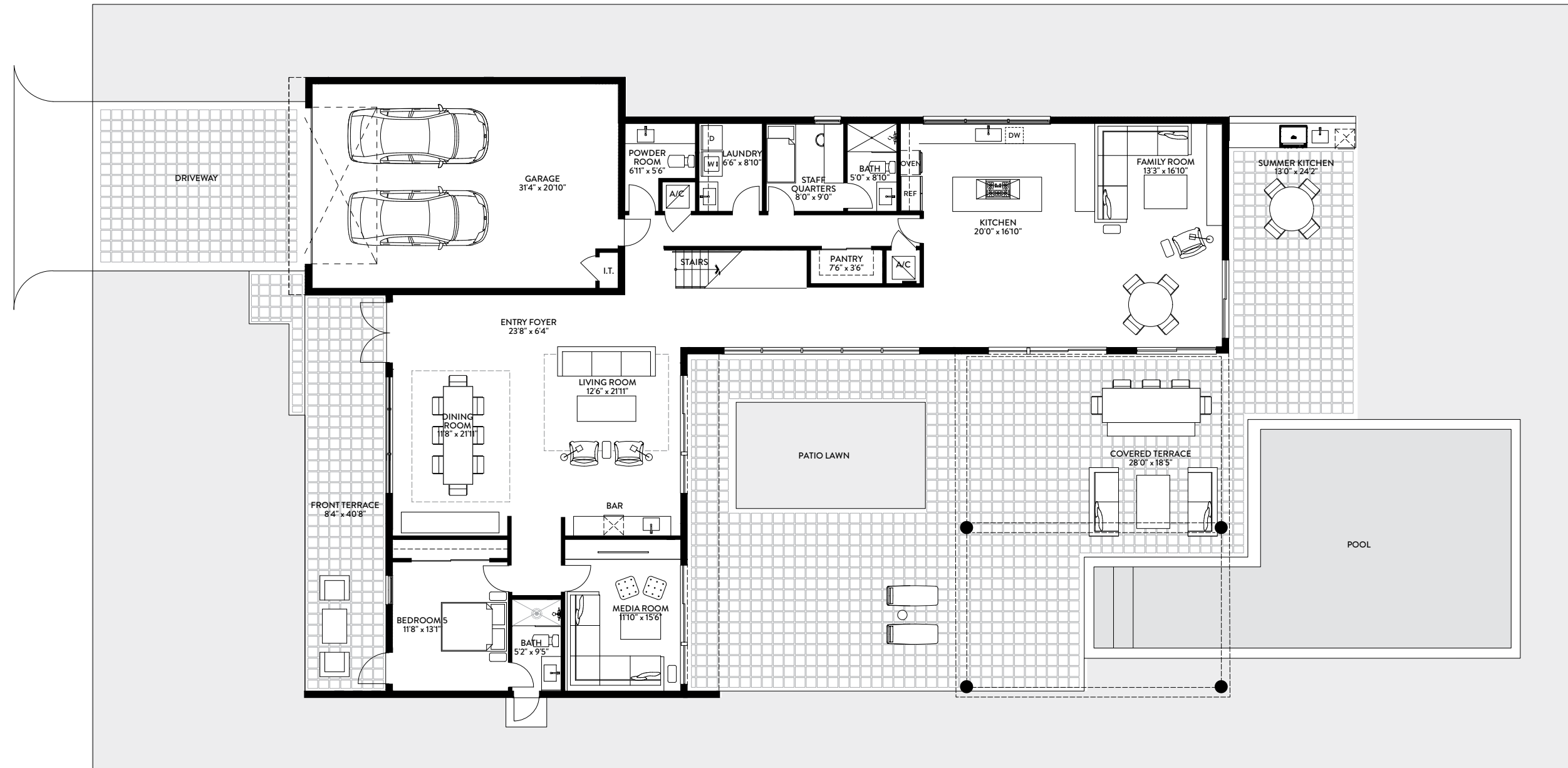
FIRST FLOOR	SQ. FT.	SQ. M.
INTERIOR	2,724	253
EXTERIOR	1,602	149
TOTAL FIRST FLOOR	4,326	402

SECOND FLOOR	SQ. FT.	SQ. M.
INTERIOR	2,569	239
EXTERIOR	657	61
TOTAL SECOND FLOOR	3,226	300

TOTAL	SQ. FT.	SQ. M.
TOTAL INTERIOR	5,293	492
TOTAL EXTERIOR	2,259	210
TOTAL	7,552	702

Stated dimensions are taken from the measurement of the floor area of the first and second level of the interior of the residence, including the interior stairs, to the exterior boundaries of the exterior walls of the residence, and exclude all areas not under A/C, including, without limitation, the garage, entry, covered terraces and/or balconies. Note that measurements as set forth on this floor plan are generally taken at the greatest points of each given area (as if the area were a perfect rectangle). Accordingly,

the area of the actual space will typically be smaller than the product obtained by multiplying the stated length times width. All dimensions are approximate and may vary with actual construction, and all floor plans and development plans are subject to change



**O3B | FIRST FLOOR**  
**5 BEDROOMS / 6.5 BATHS /**  
**MEDIA ROOM / STAFF QUARTERS**

FIRST FLOOR	SQ. FT.	SQ. M.
INTERIOR	2,724	253
EXTERIOR	1,602	149
<b>TOTAL FIRST FLOOR</b>	<b>4,326</b>	<b>402</b>

SECOND FLOOR	SQ. FT.	SQ. M.
INTERIOR	2,569	239
EXTERIOR	657	61
<b>TOTAL SECOND FLOOR</b>	<b>3,226</b>	<b>300</b>

TOTAL	SQ. FT.	SQ. M.
TOTAL INTERIOR	5,293	492
TOTAL EXTERIOR	2,259	210
<b>TOTAL</b>	<b>7,552</b>	<b>702</b>

Stated dimensions are taken from the measurement of the floor area of the first and second level of the interior of the residence, including the interior stairs, to the exterior boundaries of the exterior walls of the residence, and exclude all areas not under A/C, including, without limitation, the garage, entry, covered terraces and/or balconies. Note that measurements as set forth on this floor plan are generally taken at the greatest points of each given area (as if the area were a perfect rectangle). Accordingly,

the area of the actual space will typically be smaller than the product obtained by multiplying the stated length times width. All dimensions are approximate and may vary with actual construction, and all floor plans and development plans are subject to change



**O3B | SECOND FLOOR**  
**5 BEDROOMS / 6.5 BATHS /**  
**MEDIA ROOM / STAFF QUARTERS**

FIRST FLOOR	SQ. FT.	SQ. M.
INTERIOR	2,724	253
EXTERIOR	1,602	149
TOTAL FIRST FLOOR	4,326	402

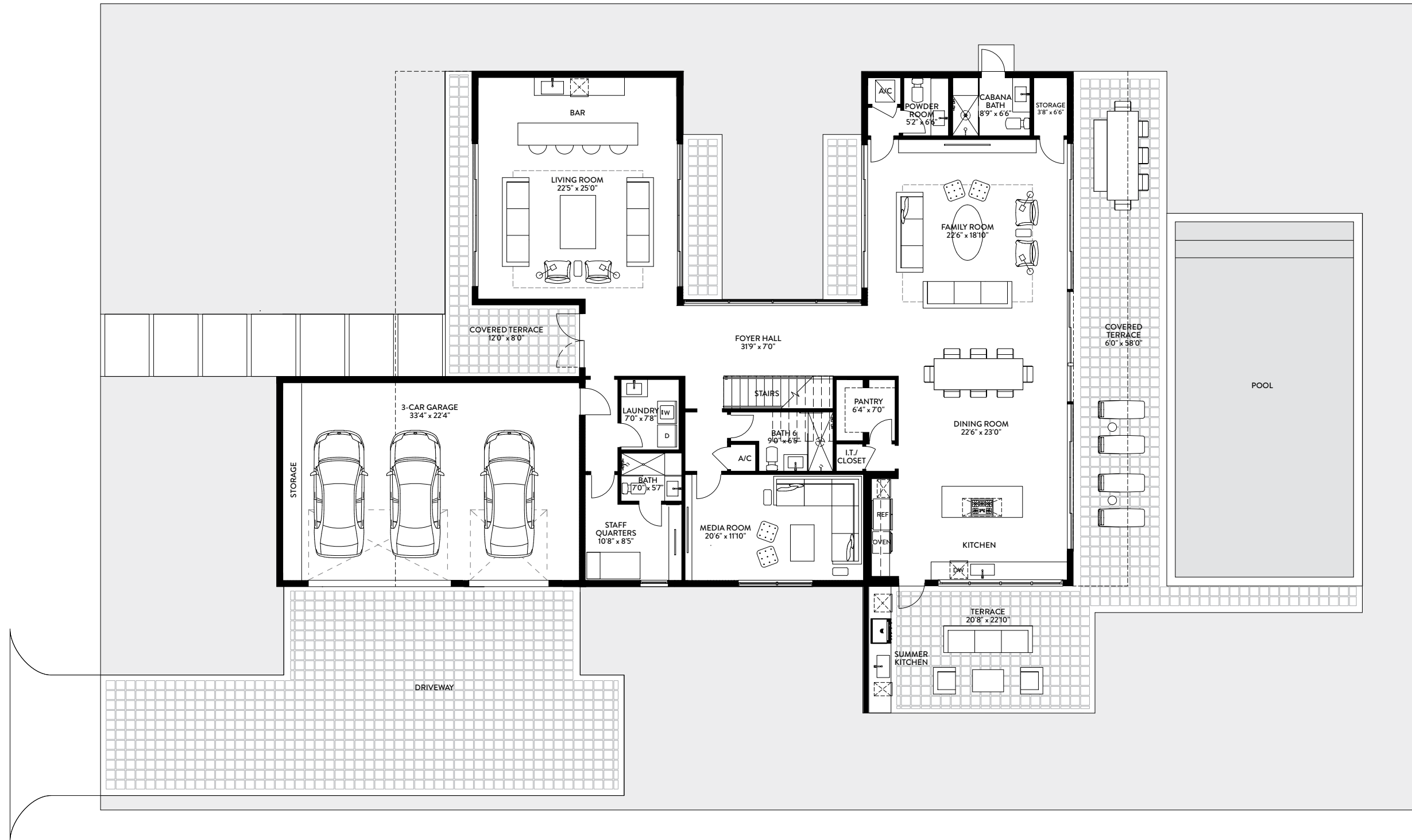
SECOND FLOOR	SQ. FT.	SQ. M.
INTERIOR	2,569	239
EXTERIOR	657	61
TOTAL SECOND FLOOR	3,226	300

TOTAL	SQ. FT.	SQ. M.
TOTAL INTERIOR	5,293	492
TOTAL EXTERIOR	2,259	210
TOTAL	7,552	702

Stated dimensions are taken from the measurement of the floor area of the first and second level of the interior of the residence, including the interior stairs, to the exterior boundaries of the exterior walls of the residence, and exclude all areas not under A/C, including, without limitation, the garage, entry, covered terraces and/or balconies. Note that measurements as set forth on this floor plan are generally taken at the greatest points of each given area (as if the area were a perfect rectangle). Accordingly,

the area of the actual space will typically be smaller than the product obtained by multiplying the stated length times width. All dimensions are approximate and may vary with actual construction, and all floor plans and development plans are subject to change





**O4 | FIRST FLOOR**  
**5 BEDROOMS / 9.5 BATHS / LOFT /**  
**MEDIA ROOM / STAFF QUARTERS**

FIRST FLOOR	SQ. FT.	SQ. M.
INTERIOR	3,016	280
EXTERIOR	1,367	127
<b>TOTAL FIRST FLOOR</b>	<b>4,383</b>	<b>407</b>

SECOND FLOOR	SQ. FT.	SQ. M.
INTERIOR	3,171	295
EXTERIOR	1,003	93
<b>TOTAL SECOND FLOOR</b>	<b>4,174</b>	<b>388</b>

TOTAL	SQ. FT.	SQ. M.
TOTAL INTERIOR	6,187	575
TOTAL EXTERIOR	2,370	220
<b>TOTAL</b>	<b>8,557</b>	<b>795</b>

Stated dimensions are taken from the measurement of the floor area of the first and second level of the interior of the residence, including the interior stairs, to the exterior boundaries of the exterior walls of the residence, and exclude all areas not under A/C, including, without limitation, the garage, entry, covered terraces and/or balconies. Note that measurements as set forth on this floor plan are generally taken at the greatest points of each given area (as if the area were a perfect rectangle). Accordingly,

the area of the actual space will typically be smaller than the product obtained by multiplying the stated length times width. All dimensions are approximate and may vary with actual construction, and all floor plans and development plans are subject to change



**O4 | SECOND FLOOR**  
**5 BEDROOMS / 9.5 BATHS / LOFT /**  
**MEDIA ROOM / STAFF QUARTERS**

FIRST FLOOR	SQ. FT.	SQ. M.
INTERIOR	3,016	280
EXTERIOR	1,367	127
<b>TOTAL FIRST FLOOR</b>	<b>4,383</b>	<b>407</b>

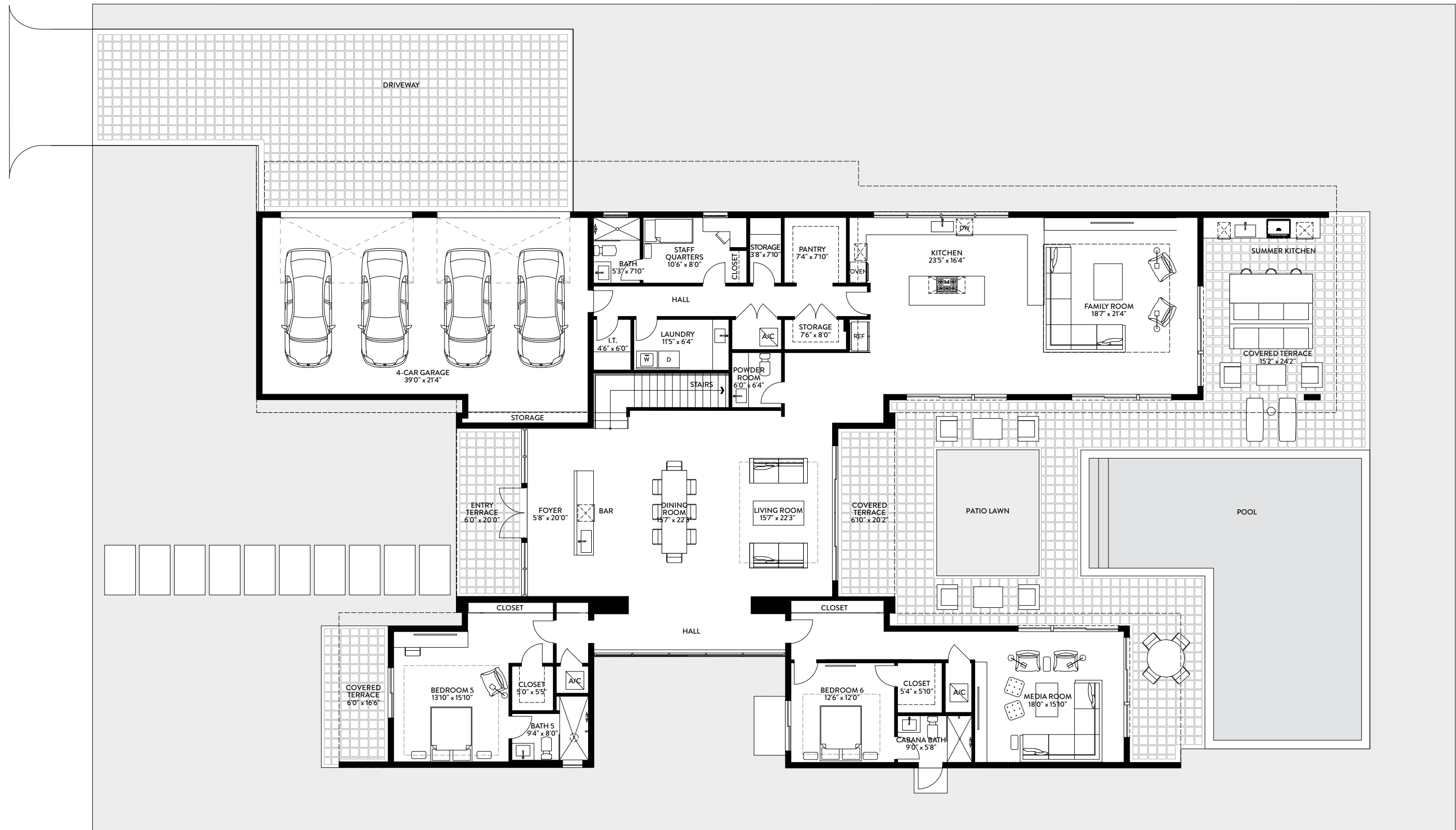
SECOND FLOOR	SQ. FT.	SQ. M.
INTERIOR	3,171	295
EXTERIOR	1,003	93
<b>TOTAL SECOND FLOOR</b>	<b>4,174</b>	<b>388</b>

**FIRST FLOOR 6200 SF**  
**MODEL**

TOTAL	SQ. FT.	SQ. M.
TOTAL INTERIOR	6,187	575
TOTAL EXTERIOR	2,370	220
<b>TOTAL</b>	<b>8,557</b>	<b>795</b>

Stated dimensions are taken from the measurement of the floor area of the first and second level of the interior of the residence, including the interior stairs, to the exterior boundaries of the exterior walls of the residence, and exclude all areas not under A/C, including, without limitation, the garage, entry, covered terraces and/or balconies. Note that measurements as set forth on this floor plan are generally taken at the greatest points of each given area (as if the area were a perfect rectangle). Accordingly,

the area of the actual space will typically be smaller than the product obtained by multiplying the stated length times width. All dimensions are approximate and may vary with actual construction, and all floor plans and development plans are subject to change



**O5A | FIRST FLOOR**  
**6 BEDROOMS / 8.5 BATHS /**  
**MEDIA ROOM / STAFF QUARTERS**

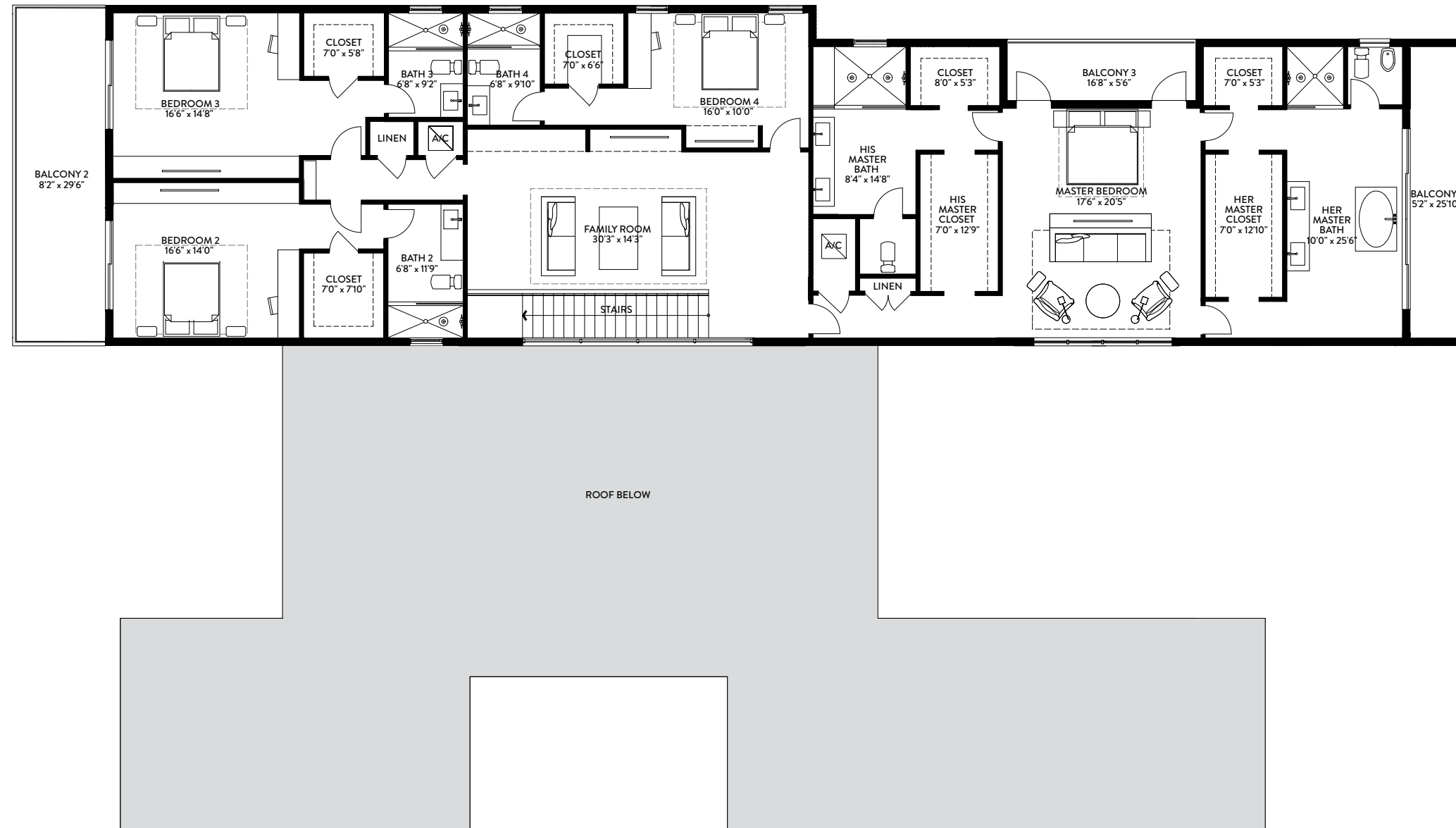
FIRST FLOOR	SQ. FT.	SQ. M.
INTERIOR	3,970	369
EXTERIOR	1,870	174
<b>TOTAL FIRST FLOOR</b>	<b>5,840</b>	<b>543</b>

SECOND FLOOR	SQ. FT.	SQ. M.
INTERIOR	3,168	294
EXTERIOR	494	46
<b>TOTAL SECOND FLOOR</b>	<b>3,662</b>	<b>340</b>

TOTAL	SQ. FT.	SQ. M.
TOTAL INTERIOR	7,138	663
TOTAL EXTERIOR	2,364	220
<b>TOTAL</b>	<b>9,502</b>	<b>883</b>

Stated dimensions are taken from the measurement of the floor area of the first and second level of the interior of the residence, including the interior stairs, to the exterior boundaries of the exterior walls of the residence, and exclude all areas not under A/C, including, without limitation, the garage, entry, covered terraces and/or balconies. Note that measurements as set forth on this floor plan are generally taken at the greatest points of each given area (as if the area were a perfect rectangle). Accordingly,

the area of the actual space will typically be smaller than the product obtained by multiplying the stated length times width. All dimensions are approximate and may vary with actual construction, and all floor plans and development plans are subject to change



**O5A | SECOND FLOOR**  
**6 BEDROOMS / 8.5 BATHS /**  
**MEDIA ROOM / STAFF QUARTERS**

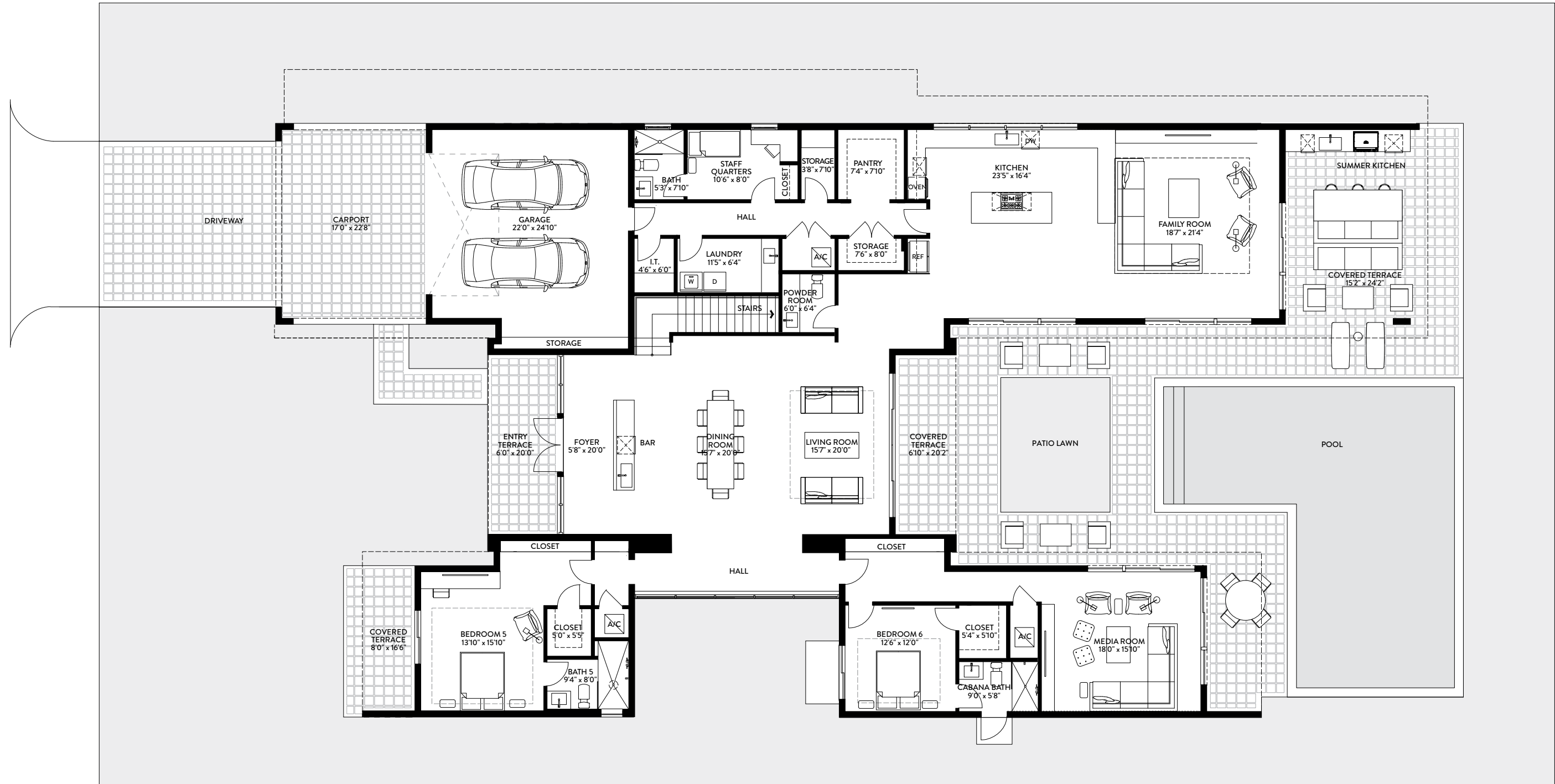
FIRST FLOOR	SQ. FT.	SQ. M.
INTERIOR	3,970	369
EXTERIOR	1,870	174
TOTAL FIRST FLOOR	5,840	543

SECOND FLOOR	SQ. FT.	SQ. M.
INTERIOR	3,168	294
EXTERIOR	494	46
TOTAL SECOND FLOOR	3,662	340

TOTAL	SQ. FT.	SQ. M.
TOTAL INTERIOR	7,138	663
TOTAL EXTERIOR	2,364	220
TOTAL	9,502	883

Stated dimensions are taken from the measurement of the floor area of the first and second level of the interior of the residence, including the interior stairs, to the exterior boundaries of the exterior walls of the residence, and exclude all areas not under A/C, including, without limitation, the garage, entry, covered terraces and/or balconies. Note that measurements as set forth on this floor plan are generally taken at the greatest points of each given area (as if the area were a perfect rectangle). Accordingly,

the area of the actual space will typically be smaller than the product obtained by multiplying the stated length times width. All dimensions are approximate and may vary with actual construction, and all floor plans and development plans are subject to change



**O5B | FIRST FLOOR**  
**6 BEDROOMS / 8.5 BATHS /**  
**MEDIA ROOM / STAFF QUARTERS**

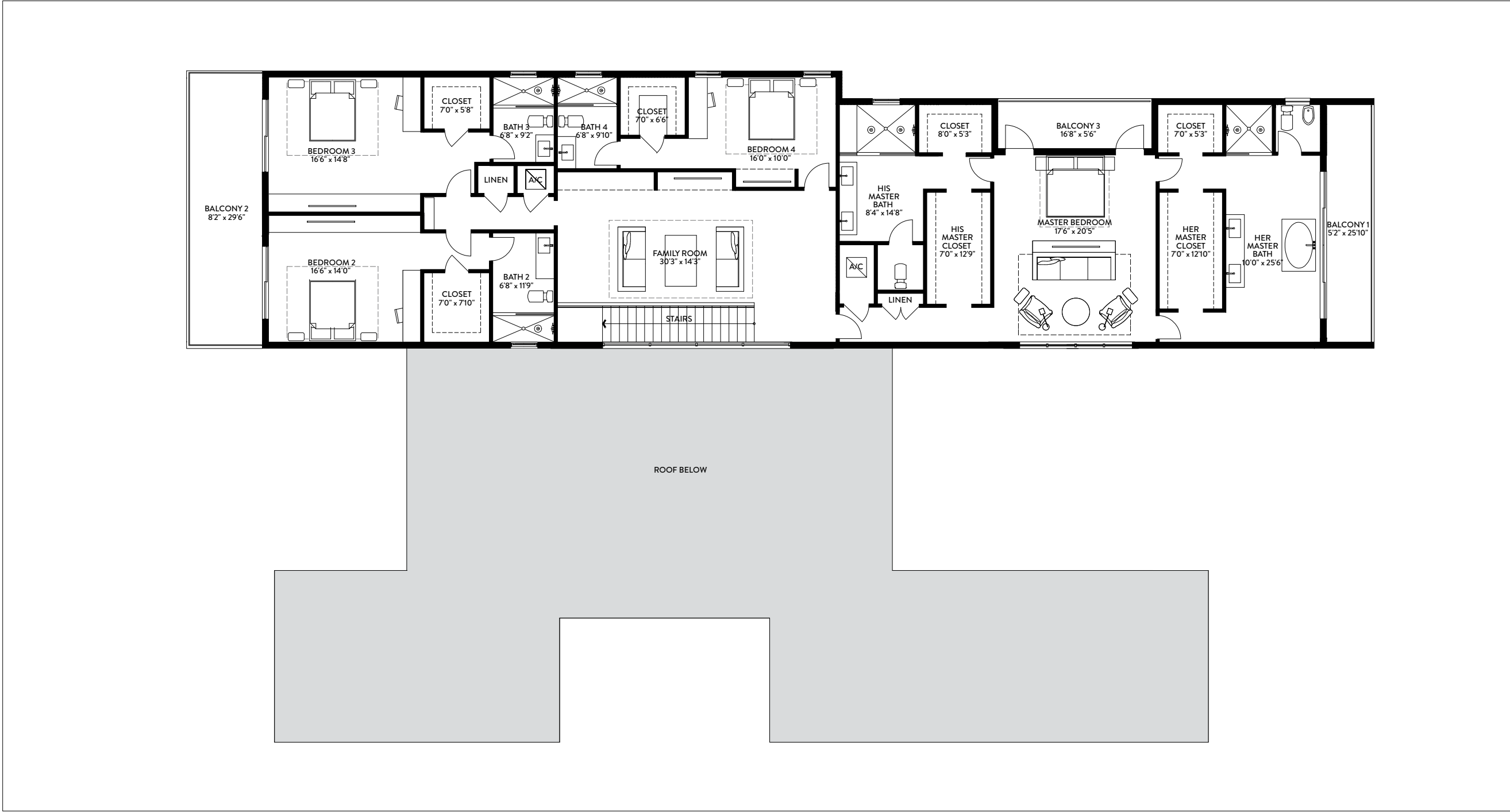
FIRST FLOOR	SQ. FT.	SQ. M.
INTERIOR	3,970	369
EXTERIOR	1,870	174
<b>TOTAL FIRST FLOOR</b>	<b>5,840</b>	<b>543</b>

SECOND FLOOR	SQ. FT.	SQ. M.
INTERIOR	3,168	294
EXTERIOR	494	46
<b>TOTAL SECOND FLOOR</b>	<b>3,662</b>	<b>340</b>

TOTAL	SQ. FT.	SQ. M.
TOTAL INTERIOR	7,138	663
TOTAL EXTERIOR	2,364	220
<b>TOTAL</b>	<b>9,502</b>	<b>883</b>

Stated dimensions are taken from the measurement of the floor area of the first and second level of the interior of the residence, including the interior stairs, to the exterior boundaries of the exterior walls of the residence, and exclude all areas not under A/C, including, without limitation, the garage, entry, covered terraces and/or balconies. Note that measurements as set forth on this floor plan are generally taken at the greatest points of each given area (as if the area were a perfect rectangle). Accordingly,

the area of the actual space will typically be smaller than the product obtained by multiplying the stated length times width. All dimensions are approximate and may vary with actual construction, and all floor plans and development plans are subject to change



**O5B | SECOND FLOOR**  
**6 BEDROOMS / 8.5 BATHS /**  
**MEDIA ROOM / STAFF QUARTERS**

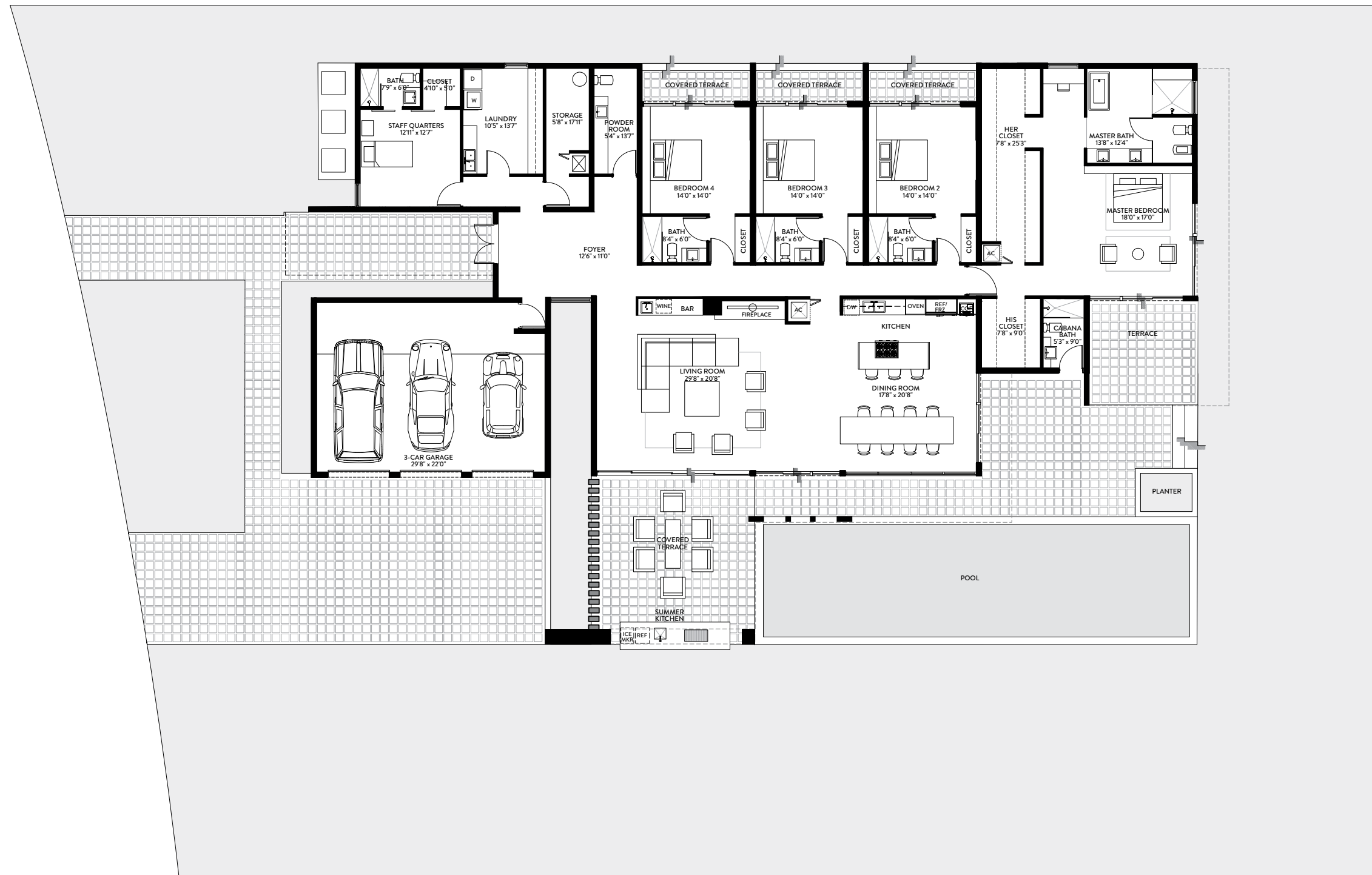
FIRST FLOOR	SQ. FT.	SQ. M.
INTERIOR	3,970	369
EXTERIOR	1,870	174
<b>TOTAL FIRST FLOOR</b>	<b>5,840</b>	<b>543</b>

SECOND FLOOR	SQ. FT.	SQ. M.
INTERIOR	3,168	294
EXTERIOR	494	46
<b>TOTAL SECOND FLOOR</b>	<b>3,662</b>	<b>340</b>

TOTAL	SQ. FT.	SQ. M.
TOTAL INTERIOR	7,138	663
TOTAL EXTERIOR	2,364	220
<b>TOTAL</b>	<b>9,502</b>	<b>883</b>

Stated dimensions are taken from the measurement of the floor area of the first and second level of the interior of the residence, including the interior stairs, to the exterior boundaries of the exterior walls of the residence, and exclude all areas not under A/C, including, without limitation, the garage, entry, covered terraces and/or balconies. Note that measurements as set forth on this floor plan are generally taken at the greatest points of each given area (as if the area were a perfect rectangle). Accordingly,

the area of the actual space will typically be smaller than the product obtained by multiplying the stated length times width. All dimensions are approximate and may vary with actual construction, and all floor plans and development plans are subject to change



**M1**  
**4 BEDROOMS / 6.5 BATHS /**  
**STAFF QUARTERS**

	TOTAL	SQ. FT.	SQ. M.
TOTAL INTERIOR	4,231	393	
TOTAL EXTERIOR	3,477	323	
TOTAL	7,708	716	

Stated dimensions are taken from the measurement of the floor area of the first and second level of the interior of the residence, including the interior stairs, to the exterior boundaries of the exterior walls of the residence, and exclude all areas not under A/C, including, without limitation, the garage, entry, covered terraces and/or balconies. Note that measurements as set forth on this floor plan are generally taken at the greatest points of each given area (as if the area were a perfect rectangle). Accordingly,

the area of the actual space will typically be smaller than the product obtained by multiplying the stated length times width. All dimensions are approximate and may vary with actual construction, and all floor plans and development plans are subject to change



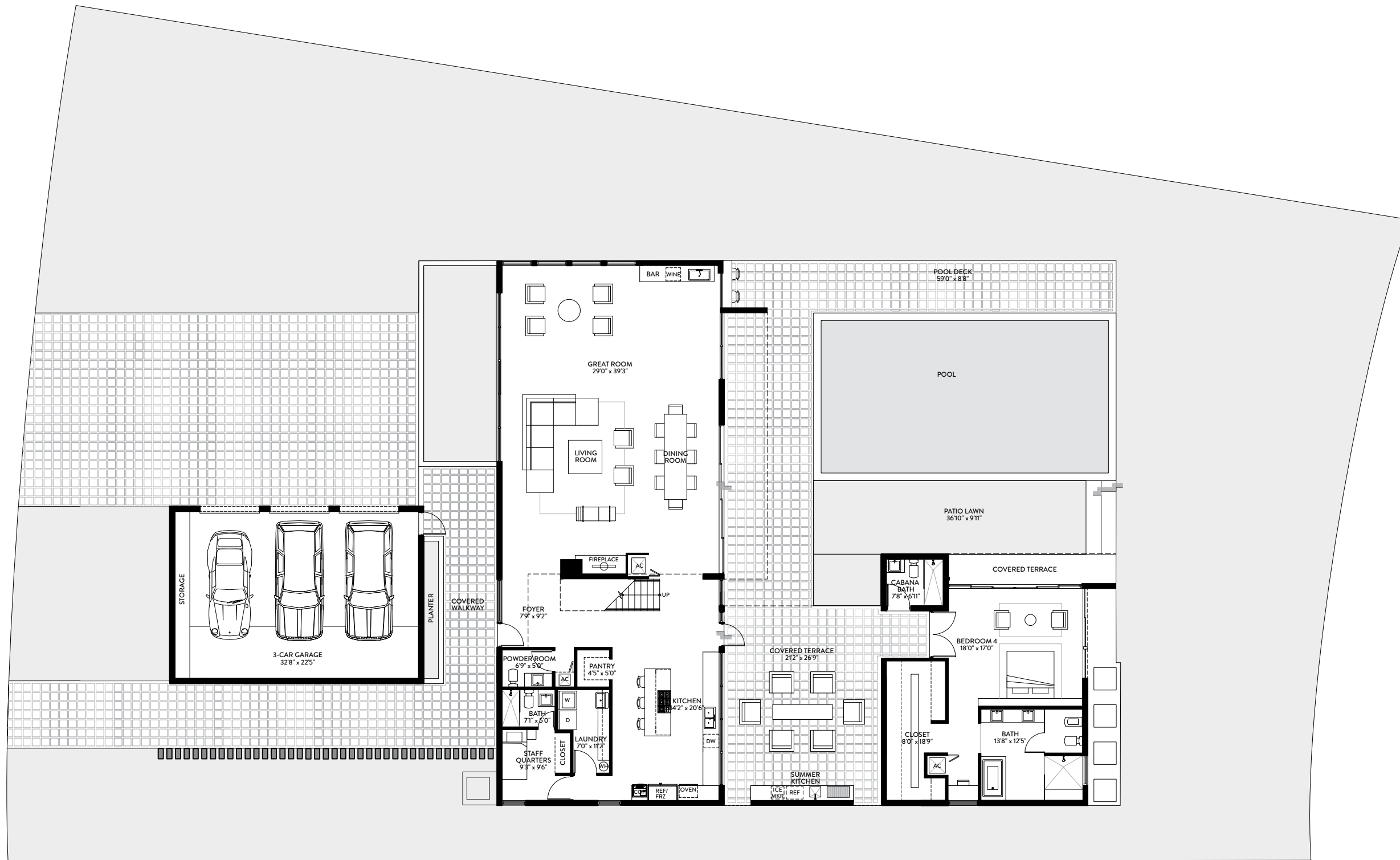
**M2**  
**4 BEDROOMS / 6 BATHS /**  
**STAFF QUARTERS**

	TOTAL	SQ. FT.	SQ. M.
TOTAL INTERIOR		5,011	466
TOTAL EXTERIOR		3,182	296
<b>TOTAL</b>		<b>8,193</b>	<b>761</b>

Stated dimensions are taken from the measurement of the floor area of the first and second level of the interior of the residence, including the interior stairs, to the exterior boundaries of the exterior walls of the residence, and exclude all areas not under A/C, including, without limitation, the garage, entry, covered terraces and/or balconies. Note that measurements as set forth on this floor plan are generally taken at the greatest points of each given area (as if the area were a perfect rectangle). Accordingly,

the area of the actual space will typically be smaller than the product obtained by multiplying the stated length times width. All dimensions are approximate and may vary with actual construction, and all floor plans and development plans are subject to change





**M3 | FIRST FLOOR**  
**4 BEDROOMS / 6.5 BATHS /**  
**STAFF QUARTERS**

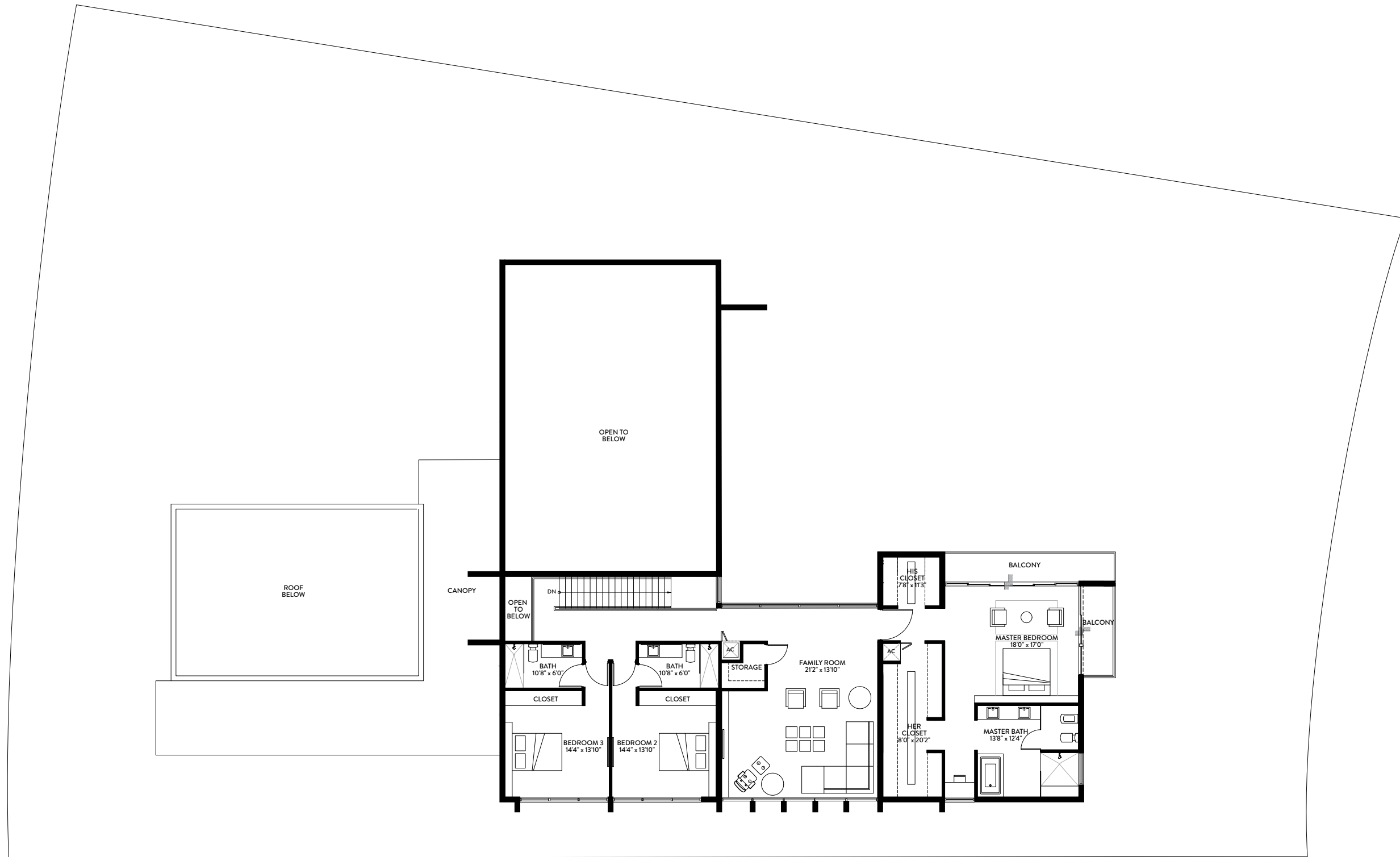
FIRST FLOOR	SQ. FT.	SQ. M.
INTERIOR	3,030	281
EXTERIOR	4,127	383
<b>TOTAL FIRST FLOOR</b>	<b>7,157</b>	<b>665</b>

SECOND FLOOR	SQ. FT.	SQ. M.
INTERIOR	2,363	220
EXTERIOR	143	13
<b>TOTAL SECOND FLOOR</b>	<b>2,506</b>	<b>233</b>

TOTAL	SQ. FT.	SQ. M.
TOTAL INTERIOR	5,393	501
TOTAL EXTERIOR	4,270	397
<b>TOTAL</b>	<b>9,663</b>	<b>898</b>

Stated dimensions are taken from the measurement of the floor area of the first and second level of the interior of the residence, including the interior stairs, to the exterior boundaries of the exterior walls of the residence, and exclude all areas not under A/C, including, without limitation, the garage, entry, covered terraces and/or balconies. Note that measurements as set forth on this floor plan are generally taken at the greatest points of each given area (as if the area were a perfect rectangle). Accordingly,

the area of the actual space will typically be smaller than the product obtained by multiplying the stated length times width. All dimensions are approximate and may vary with actual construction, and all floor plans and development plans are subject to change



**M3 | SECOND FLOOR**  
**4 BEDROOMS / 6.5 BATHS /**  
**STAFF QUARTERS**

FIRST FLOOR	SQ. FT.	SQ. M.
INTERIOR	3,030	281
EXTERIOR	4,127	383
TOTAL FIRST FLOOR	7,157	665

SECOND FLOOR	SQ. FT.	SQ. M.
INTERIOR	2,363	220
EXTERIOR	143	13
TOTAL SECOND FLOOR	2,506	233

TOTAL	SQ. FT.	SQ. M.
TOTAL INTERIOR	5,393	501
TOTAL EXTERIOR	4,270	397
TOTAL	9,663	898

Stated dimensions are taken from the measurement of the floor area of the first and second level of the interior of the residence, including the interior stairs, to the exterior boundaries of the exterior walls of the residence, and exclude all areas not under A/C, including, without limitation, the garage, entry, covered terraces and/or balconies. Note that measurements as set forth on this floor plan are generally taken at the greatest points of each given area (as if the area were a perfect rectangle). Accordingly,

the area of the actual space will typically be smaller than the product obtained by multiplying the stated length times width. All dimensions are approximate and may vary with actual construction, and all floor plans and development plans are subject to change